



50 YEAR ANNIVERSARY

OUR MISSION STATEMENT

Inspired by the adventurous past, we enable a delightful present by creating high quality furniture and décor, bringing the best of both worlds together.

Striving to impress and surprise in everything we do, we deliver designs with stories to tell. Enriching any space from traditional to modern minimalist all over the world.



TABLE OF CONTENTS

| | |
|-------------|-----|
| FURNITURE | 10 |
| SEATING | 32 |
| LIGHTING | 38 |
| AVIATION | 46 |
| NAUTICAL | 62 |
| GLOBES | 70 |
| LIFESTYLE | 78 |
| INSTRUMENTS | 100 |
| GIFTS | 114 |
| INDEX | 133 |
| CONTACT | 135 |
| DISCLAIMER | 136 |



ABOUT US

1968年に創設されたAUTHENTIC MODELS(オーセンティックモデルズ)は歴史的な価値の高い家具やオブジェ、模型を手掛けるブランドです。50周年を迎えたオーセンティックモデルズは、ロゴとカタログのデザインを一新し、新たな船出となりました。

創設者であるHARING PIEBENGAは、常にオリジナルの商品の開発・設計に挑戦し、培ってきたスキルと自分達の誇りを持つことを信念としていました。今日でも彼の信念は引き継がれており、現代の環境に合わせた新技術を取り入れ、流行に敏感な人々に魅力的な商品をお届けすることで、古き良き冒険の精神を伝えています。

オーセンティックモデルズの2018年のコレクションでは、これまでの50年間の歴史をインスパイアしたオーセンティックモデルズ社の新しい時代の始まりと共に、洗練された美学的美しさを表現しています。大量生産による均一化された世界ではなく、高品質でオリジナリティのあるデザインであること、個々の伝承技術の未来を目指しています。



FURNITURE

COLLECTION

During the late Victorian era, the wealthy and famous really travelled in style. Journeying on luxury steamers and staying in grand hotels, they were surrounded all the way by beautifully crafted furniture. To make sure everything was just right, they would often even have their own favourite pieces brought along!

Inspired by the elegant styles and ingenious designs these colonial travellers were so attached to, Authentic Models has created distinctive accent furniture which brings much-admired quality into modern day homes. Attentively finished with French polishing, brass fittings and leather features, just like the originals.



Made in the style of turn-of-the-century travel trunks. Solid brass hardware and bridle leather accoutrements complete a hand-built large trunk on sturdy wheels. A multitude of drawers, two serving trays, racks for both horizontal and vertical bottles. Mirror and foldout work shelf. Taking out the shelf unit on the right frees up a removable game board. In Solid Black, Ivory White and Gun metal Grey. And to celebrate our anniversary, a special limited edition in Silver Metallic with red leather handles.



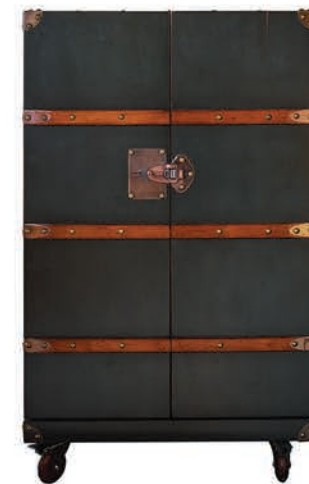
Stateroom Bar,
Ivory
MF078
M. 59 x 147 x 62cm, 23.25 x 58 x 24.5"



New Stateroom Bar,
Grey
MF078G



Stateroom Bar,
Black
MF078B



New Polo Club Bar, Grey
MF114G
M. 60.5 x 98 x 55cm, 24 x 39 x 22"



Hailing from the Belle Epoque, an era when armies of stewards and porters used to wheel trunks from the Wagons-Lits train to a waiting transatlantic steamer. Those were the days! Big enough for pur-sang bartending but small enough to fit into a chic studio. Wood with leather accents and bronze hardware. Varnished wood slats for protection.



Polo Club Bar, Black
MF114B
M. 60.5 x 98 x 55cm, 24 x 39 x 22"



Casablanca Bar, Black
MF047B
M. 104 x 52 x 110.5cm, 41 x 20.5 x 43.5"



This bar exceeds imagination as it has hidden wheels, three game boards and a glass top. It stores oodles of bottles and gear, and wheels into tight corners. A simple, fun, unobtrusive piece of furniture. Easy to put away, but also easy to roll into the center of the action.



A welcome addition to our successful collection of trunk bars. This time complete with a clever foldout table cum standing desk. Leather straps and handles. Compact and easy to roll around.



Grand Club Trunk Bar
MF134
M. 54 x 127 x 48cm, 21.25 x 50 x 19"

Victorian luggage was made to ship by train, steamer, and horse drawn coach. Trunks were sent ahead and handled exclusively by porters. The tall, square shape of our 'end table' trunk was designed to fit easily into tight cabins during extensive travel. Enjoy the flavor of a bygone age of luxury.



Stateroom End Table, Ivory
MF079
M. 53 x 45 x 56cm, 21 x 17.75 x 22"



New Stateroom End Table, Grey
MF079G



Stateroom End Table, Black
MF079B



Bombay Box, 2-tone Honey
MF113
M. 56.5 x 65.5 x 40cm, 22.25 x 26 x 15.75"

Mary and John Newby from Arkaroola (N.S.Wales) went every year in the Twenties to the Camel Fair in India. Bringing along a stock of fine wines to survive hardship, they strapped campaign boxes onto their Bentleys and headed to the desert for a week or so to live in tents.



Bombay Box
MF111
M. 56.5 x 65.5 x 40cm, 22.25 x 26 x 15.75"



War Chest
MF121
M. 56.5 x 65.5 x 40cm, 22.25 x 26 x 15.75"

Our war chest is an addition to a highly successful collection of multi-drawer chests on functional, elegantly crossed legs. This one is to fool the professional eye because the 'stash' goes in the back.



Grandmaster's Box
MF112
M. 45 x 66 x 45cm, 17.75 x 26 x 17.75"

Game tables made for Armies on the move always served multiple functions. Two drawers hold chess and checker game sets. Game pieces not included.

In bygone days traveling was for restless souls with matching bank accounts and a yen for romance. Professional brass hardware, brass locks and keys, steamed cherry wood bent slats. Complete with hand turned legs to serve a further life as a coffee table. Honey finished wood inside.



Stateroom Trunk, Ivory
MF040
M. 82 x 45 x 58cm, 32.25 x 18.25 x 22.75"



New Stateroom Trunk, Grey
MF040G



Stateroom Trunk, Black
MF040B



Coffee Table/Bench
MF146
M. 98 x 43 x 45.5cm, 38.5 x 17x 18"

This multi-purpose piece has a drawer and a large tray, easily accessed by pulling out from either front or back sides.



Bombay Salon Table
MF097
M. 117.5 x 68.5 x 45cm, 42.25 x 27 x 17.75"

In the rich tradition of 19th C. Army and Navy furniture makers; a coffee table on a stand that knocks-down for easy transport and storage. Eight drawers allow for storage of books, mail, keys, and ephemera. Always practical, decorative and never boring. Drawers open on both sides.



Game Table, Ivory

MF005

M. 80 x 80 x 45cm, 31.5 x 31.5 x 17.75"



Game Table, Black

MF020

M. 80 x 80 x 45cm, 31.5 x 31.5 x 17.75"



Game Table, #2

MF034

M. 120 x 62.5 x 45cm, 47.25 x 24.75 x 17.75"

Enjoy playing dice, chess or backgammon. An other option is to pull out the green board to play domino, poker or Monopoly. When not in the mood for games, just flip the board and go for cherry wood top or faux leather.



Casino Royale Game Table

MF092

M. 82.5 x 82.5 x 76cm, 32.5 x 32.5 x 30"

Pull up a comfy chair and select your game of choice. Chess, backgammon, poker, or just a game of cocktails? Shipped disassembled, it makes for easy assembly, but also disassembly and storage. Brass details make this table an indestructible creation for generations of use.



Gallery Globe Table

MF123

M. 83.5 x 110.5 x 67cm, 33 x 43.5 x 26.5"

Designed and built to withstand the tribulations of an Imperial Army on campaign. British and French colonial furniture was designed and made to be indestructible.

Exceptional artistry is used to expertly cut and assemble a Mariners star into this table which makes it into a truly nautical piece. Victorians called this style of table a cocktail table. We call it just beautiful...



Mariner Star Table

MF085

M. 55 x 55 x 55cm, 21.75 x 21.75 x 21.75"



New Antique Side Table

MF154

M. 47 x 47 x 51.5cm, 18.5 x 18.5 x 20.3"

Once there was a time when porters took care of luggage. Functional a century ago, now an elegant and decorative treasure. Our trunks are inspired by the old, classic travel trunks of yore. True canvas covered with solid brass hardware. Steamer-varnished hardwood slats. Ideal as an end table, combining storage, functionality and design!



Polo Club End Table Trunk

MF098

M. 55 x 55 x 60cm, 19.5 x 19.5 x 23.5"
EU Only



Dory Bookshelf/Table with Glass

WO102

M. 119 x 49.5 x 40cm, 46.75 x 19.5 x 15.75"

Our Dory can be used in two ways; as a bookshelf or as a glass topped table. Use as table and fill inside with beach finds. Upright it displays your shells and books.

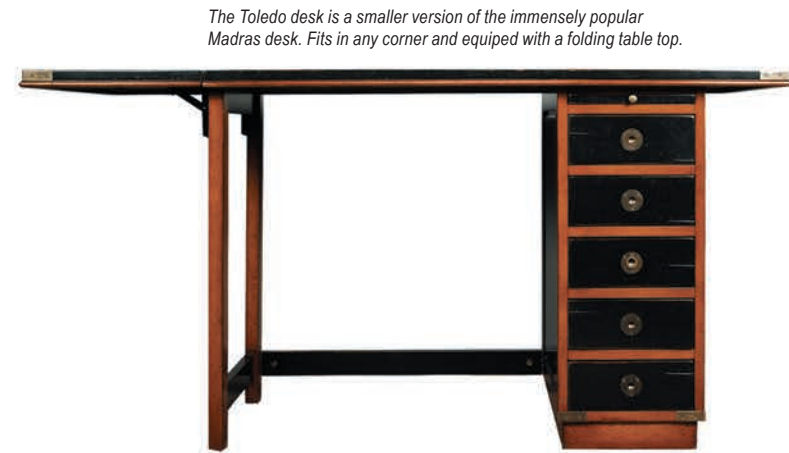


New Wall Table

FT003

M. 34 x 110 x 79cm, 13.4 x 43.34 x 31.13"
EU Only

Slim 2-drawer table provides elegant storage and display for hallway, office or living room. French polished lime tree table with blue-grey features, from the same family as the Confident desk and the Grille bookcase.



The Toledo desk is a smaller version of the immensely popular Madras desk. Fits in any corner and equiped with a folding table top.

Toledo Desk

MF148

M. 152 x 56.5 x 78.5cm, 60 x 22.25 x 31"
(with extension)
119.5 x 56.5 x 78.5cm, 47 x 22.25 x 31"
(with extension folded down)

Look at our Madras desk: warm and rich looking, soft and easy to the touch. Drawers to hold documents and treasures. Brass campaign corners to survive damage during challenging moves across the country or even oceans. Also, this piece is made to travel well.



Travel Desk 'Madras'

MF056

M. 120.5 x 55 x 78cm, 47.5 x 22 x 30.75"
EU Only



Navigator's Desk, Ivory

MF011

M. 140.5 x 70 x 78cm, 55.5 x 27.5 x 30.75"

Desks on board of ships had to be multi-functional. In the case of our desk, the two supports could act as steps. Leather top, hand rubbed French finish, somewhat beat-up due to its many voyages and colorful history.



Navigator's Desk, Black

MF022

M. 140.5 x 70 x 78cm, 55.5 x 27.5 x 30.75"



Captain's Desk, Ivory

MF013

M. 170 x 75 x 77cm, 67 x 29.5 x 30.5"

The captain's desk was tailor made to offer maximum comfort and space in a minimal floor area. Sturdy construction to withstand often violent ship's movements. Well-traveled, made of cherry and provided with a faux leather insert top.



Captain's Desk, Black

MF014

M. 170 x 75 x 77cm, 67 x 29.5 x 30.5"



Campaign Cabinet Desk
MF143
M. 80 x 47.5 x 117cm, 31.5 x 18.75 x 46"



Bureau Architecte
MF086
M. 110 x 55 x 77cm, 39.5 x 22 x 30.5"



Speaker's Lectern
MF144
M. 52.5 x 52.5 x 118cm, 20.75 x 120.75 x 46.5"

Our tall desk on elegant x-legs stand is made for those who prefer to stand. But pulling up a barstool to sit behind it is possible too. With red interior storage space under the hinged lid.



On-the-Go Desk
MF145
M. 45 x 70 x 73cm, 17.75 x 19.75 x 28.75"

This Leaning Desk is a clever one. Its narrow profile is perfect for anyone in limited quarters. The writing surface easily slides down against table legs for compact storage. Lean it closed against a wall, at-the-ready for a small work project.



Campaign Files, Black
MF039
M. 45 x 70 x 73cm, 17.75 x 19.75 x 28.75"

Filing cabinets are essentially boring entities. Grandeur and elegance is not associated with the domain of organization but our two-drawer Campaign Files are ready to travel. Rolls where needed at the push of a finger. Laden with written treasures, documents and papers of content.



Chopin's Desk
MF118
M. 103 x 56.5 x 110cm, 40.5 x 22 x 43.25"
EU Only

The story goes that Chopin, the famous 19th C. composer, had a similar desk drawn up by his Paris cabinetmaker. It may never have been turned into reality but we love to present products which hold a story within a story. Our secret drawer is big enough to hold sheaves of music sheets, a last will and testament. The desk ships with legs disassembled, sets up easily, and is a great conversation piece.



Bureau Architecte, Tall
MF087
M. 110 x 55 x 110cm, 39.5 x 22 x 39.5"



Valet de Chambre
MF125
M. 59 x 63.5 x 121.5cm, 23.25 x 25 x 48"

The 'Valet de Chambre' was traditionally a personal servant for the master of the house in Victorian times. It's hard to think of a more effective valet than our valet desk, which will never tire and can't speak back. Easy to transform into a library unit or a living room support unit holding essentials.



New Confident Desk
FT001
M. 61 x 70 x 158cm, 24.03 x 27.58 x 62.25"
EU Only

Ingenious slim design incorporating various drawers, shelves and a lockable pull-down table takes care of all your deskwork practicalities in one unobtrusively stylish piece of furniture. Made of French polished lime tree with some blue-grey features. Can pair with the Grille bookcase (FT002) and Wall table (FT003).



Collectors Cabinet II, Doors
MF070B
M. 55.5 x 35.5 x 145cm, 22 x 14 x 57"

In the 16th C. you wouldn't be considered cultured if collecting wasn't part of your world. Collecting was de rigueur and collectors need drawers to store and categorize. Collectors with taste wanted to have a cabinet of elegant proportions with lots of drawers. Our Collectors Cabinet, when multiplied, can fill a wall as if it's on whole.



Porthole and Notary Cabinets. US yachtsmen like the Vanderbilts and Roosevelts visiting the Royal Yacht squadron clubhouse at Cowes, England were surprised at the lack of locker rooms, showers and docks. Even a bar was absent. In contrast the cabins and staterooms of the visiting American yachts were resplendent with grandeur. Our beautiful cabin cabinet with large porthole windows, fine interior upholstery and cabinetwork fits to any space from classic to modern.



Porthole Cabinet

MF027

M. 92 x 46.5 x 153cm, 36.25 x 18.5 x 60.25"
EU only



Kunstammer Console

MF096

M. 113 x 54 x 76cm, 44.25 x 21.25 x 30"



We strive to make the practical exude romance and the historical to include a touch of contemporary. Making efficient use of every inch and centimeter, the Cape Cod Locker can hold towels and sailor's scarves, polo gear and golfing shoes. Air circulates ingeniously, banning odors and keeping things dry with fragrant freshness. A veritable balancing act of the exotic and matter-of-fact.

Cape Cod Locker, Black

MF061

M. 40 x 35 x 120cm, 15.75 x 13.75 x 47.25"
EU Only



Don't be fooled by its elegant appearance. This desk holds some serious surprises and secrets. Two stacked units offer compact storage so no wasted space here. At the same time a secret document box in the back to store personals, banknotes or first love letters.

Secrétaire 'Grand Hotel'

MF063

M. 80 x 49 x 108.5cm, 31.5 x 19.25 x 42.75"



Caddie Cabinet

MF120

M. 42 x 46 x 104cm, 16.75 x 18 x 41.75"



Stateroom
Armoire, Ivory
MF077

M. 60 x 50 x 130cm,
23.75 x 19.75 x 51.25"

Inspired by early 19th C. traveling closets, AM offers a highly practical trunk reproduction called the Armoire. It features 7 shelves and drawers to store and display. Hand-sewn bridle leather straps and brass hardware support a foldout shelf for use as workspace. Inset shelf-unit with a removable mirror stored in the back. Fun, decorative and practical. Locks with keys.



Stateroom
Armoire, Black
MF077B



Kunstkammer Cabinet
MF088
M. 122.5 x 54 x 205.5cm, 48.25 x 21.25 x 81"



Cambridge
Bookcase
MF095
M. 122.5 x 96 x 205.5cm, 48.25 x 37.75 x 81"



Ritz Lobby
Cabinet, Honey
MF050
M. 92.5 x 41 x 156cm,
36.5 x 16.25 x 61.5"
EU Only



Ritz Lobby
Cabinet, Black
MF051
EU Only



Front MF050 MF051



New Grille Bookcase
FT002
M. 51 x 99 x 182cm, 20.09 x 39.01 x 71.71"
EU Only

A perfect partner piece to the Confident desk (FT001) and Wall table (FT003), with adjustable shelves to fit your needs. In French polished lime tree set off with blue-grey features.



Our most unique bookcase as of yet! With plenty of space for items you want to display as well as for those you don't... Two inconspicuous side panels hold the secret!

Alchemist's Bookcase
MF116
M. 110.5 x 50.5 x 100.5cm, 43.5 x 19.75 x 39.75"

This Library Ladder is easily installed. The top and bottom have brass sleeves on all four sides, flush inlaid brass hardware and hefty bronze drawer handles. This bookcase will survive centuries.



Library Ladder
MF068
M. 50 x 45 x 245cm, 19.75 x 17.75 x 96.5"



Library Ladder, Ivory
MF068I



Bosun's Gig
MF036

M. 68 x 30.5 x 185cm, 27 x 12 x 73"

Gigs were very useful when in port or moored outside. Easy to lower overboard, needed minimum crew, and they could be quickly dispatched. Ours are not seaworthy but they most certainly look like the real thing, adding some flair and atmosphere to any room. In honey French finish with black or off white detail.



New
Bosun's Gig, White
MF036W

M. 68 x 30.5 x 185cm, 27 x 12 x 73"



Dory Bookshelf/
Table wth Glass
WO102

M. 119 x 49.5 x 40cm, 46.75 x 19.5 x 15.75"



Waikiki Shelf
FE122

M. 195 x 25.5 x 18cm, 76.75 x 10 x 7"

A surfboard cut in half, serves to hold souvenirs from your beach adventures.



Man of Eight Bookcase
MF007

M. 46.5 x 25 x 216.5cm, 18.25 x 10 x 85.25"

Racing eights is an Olympic sport, upper class, academic and only accessible to the very smart and highly athletic. These long, narrow and fast wooden racers were cut up in sections when retired. Transformed into bookcases they lined the halls of famous Universities.



Waikiki Surfboard
FE121

M. 195 x 50 x 18cm, 76.75 x 19.75 x 7"

Only a few craftsmen now have the skills needed to build a classic wooden surfboard. Long enough to ride the waves and short enough to casually lean into a corner of your living room.



Oxford Varsity Coat Stand
FE117

M. 68.5 x 68.5 x 187.5cm, 27 x 27 x 73.75"

Three oars make up a sturdy and attractive coat stand. Brass hardware, turned finial, rattan key & change basket. Practical, attractive, colorful. Assembly required.



Grand Hotel Rack
MF132

M. 128.5 x 56 x 180cm, 50.5 x 22 x 71"
Hangers not included

Inspired by a Grand Hotel rack from an old colonial hotel in Burma. Distressed black finish on hardwood. Elegant hand turned finials. Practical wheels to move it around.



Grand Hotel Hanger
MF133

M. 44 x 4.5 x 28.5cm, 17.5 x 1.75 x 11.25"



Butlers Buddy
MF140

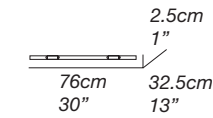
M. 51.5 x 47 x 104cm, 20.25 x 18.5 x 41"

The Butler's Buddy is designed for men who like fashion and take care of their gear. Made for looks but also practicality. That's why women want their own too. In black and gun metal grey.

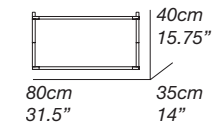




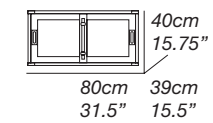
Campaign Stacking Unit, Shelf
MF203



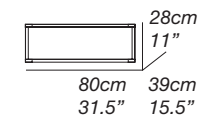
Campaign Stacking Unit, Desk
MF207



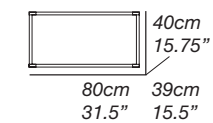
Campaign Stacking Unit, Doors
MF202



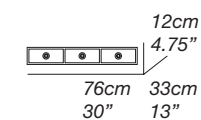
Campaign Stacking Unit, Small
MF206



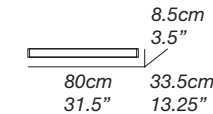
Campaign Stacking Unit, Open
MF201



Campaign Stacking Unit, Drawers
MF204



Campaign Stacking Unit, Base
MF200





SEATING

COLLECTION

To complement Authentic Models' range of colonial era inspired furniture, we are proud to present a selection of seating options. Choose from designs which closely match our desks, tables and cabinets, or take a seat in one of our campaign chairs. These faithful replicas from the Georgian and Victorian periods let you experience the high-quality portable furniture British officers of high social position often transported with them when travelling.

Whether you use them for rest, work or atmospheric decoration, our lovingly crafted chairs, stools, pouffes and benches embody the sense of pride felt by those who used to influence society. French polished wood, aromatic leather and delightful details at every turn entice the senses and exude an air of sophistication.



Gaucho Field
Chair

MF131

M. 55 x 56 x 89cm, 21.75 x 22 x 35"



Leather/Canvas
Chair

MF151

M. 55 x 56 x 89cm, 21.75 x 22 x 35"



Bridle Leather
Campaign Chair

MF122

M. 55 x 56 x 89cm, 21.75 x 22 x 35"



Purser's Chair, Black & Honey

MF081

M. 55 x 61 x 78.5cm, 21.75 x 24 x 31"

*Striking, yet unassuming,
our Purser's Chair is the
answer to many requests
for a desk chair to match
our collection of desks.
Handmade in hardwood, this
chair will survive the ages
when treated with respect.*



Purser's Chair, Ivory & Honey

MF082

M. 55 x 61 x 78.5cm, 21.75 x 24 x 31"



Bar stool
de Luxe, Honey

MF044A

M. 37.5 x 37.5 x 101.5cm, 14.75 x 14.75 x 40"



Cartagena Chair

MF139

M. 65.5 x 65 x 82cm,
25.75 x 25.75 x 32.25"

*The original design goes back to officer's
club of mounted cavalry from around
the turn of the century which is 1900's.
Minimalist and functional, knock down,
bridle leather seat and back.*



Campaign Folding Chair

MF126

M. 55 x 55.5 x 85.5cm, 21.75 x 22 x 33.75"



Artisan Stool, Low

MF149

M. 41.5 x 39 x 46cm, 16.25 x 15.5 x 18.25"



Artisan Stool, Medium

MF150

M. 41.5 x 42 x 63cm, 16.25 x 16.5 x 24.75"



Navy Chair, Black/Honey

MF046Z

M. 55 x 60 x 79cm, 21.75 x 23.75 x 31.25"

*Its shape goes back a hundred years;
its mystique is that of early 1900's
offices. It can survive a student's dorm
room and will faithfully and decorously
serve as dining chair.*



Navy Chair, Ivory/Honey

MF046

M. 55 x 60 x 79cm, 21.75 x 23.75 x 31.25"



Bar stool 'Grand Hotel', Honey

MF043A

M. 37.5 x 37.5 x 73cm, 14.75 x 14.75 x 28.75"

*The design of our tall brasserie
accessory goes back to the late 19th C.
when bentwood furniture was developed
in Vienna and exported across Europe
and the rest of the world. Timeless in
style and sturdy in construction, many
have survived ages. And ours will follow
the same tradition, when handled with
love and care.*



Tripod Stool

MF152

M. 36 x 33 x 55cm, 14.25 x 13 x 21.75"



Fireside Stool

MF115

M. 52 x 40 x 60.5cm, 20.5 x 15.75 x 23.75"



Dining Deck Chair

CF251

M. 67 x 58.5 x 104cm, 26.5 x 23 x 41"
EU Only

Put out on the promenade decks of transatlantic steamers in the early morning. Reclining chairs for the ones who wanted to stretch out a bit and enjoy the attached leg-rest, or hocker as it was then called.



New Navigator's Pouffe Cover

KD008

M. 60 x 60cm, 23.6 x 23.6"

Want to have the world at your feet? With this canvas globe-themed pouffe, you can! Fun for adventurous adults and inspirational for curious children.



New Navigator's Cushion

KD005

M. 50 x 50cm, 19.7 x 19.7"



Clockmaker's Stool #1

MF128

M. 43.5 x 38 x 63.5cm, 17.25 x 15 x 25"
63.5cm, 25" high, 51cm, 20" low
EU Only

Clockmakers and jewelers are possibly the finest craftsmen in the public's eye. To imagine these specialists spending most of the day perched on a diminutive stool working with their tools of trade. Granted, the stool was fitted with a spindle to set proper height and crafted from durable airplane aluminum.



Clockmaker's Stool #2

MF129

M. 46.5 x 41 x 67cm, 18.25 x 16.25 x 26.5"
67cm, 26.5" high, 52cm, 20.5" low



Clockmaker's Stool #3

MF130

M. 40 x 35 x 64cm, 15.75 x 13.75 x 25.25"
64cm, 25.25" high, 52.5cm, 20.75" low



Pommel Bench Small

MF141

M. 81 x 36 x 49.5cm, 32 x 14.25 x 19.5"



Pommel Bench Large

MF142

M. 110 x 36 x 49.5cm, 43.25 x 14.25 x 19.5"



Speakeasy Seat

MF138

M. 35.5 x 35.5 x 82cm, 14 x 14 x 32.25"
82cm, 32.25" high, 71cm, 28" low

Casually classy, this worn-look pouffe is a perfect dress-down complement to our other furniture items. A versatile addition with decorative appeal that you can call into action whenever you want to put your feet up.



New Casual Leather Pouffe

ST001

M. 75 x 75 x 40cm, 29.6 x 29.6 x 15.8"



LIGHTING

COLLECTION

Out at sea, highly functional lighting that's unforgivingly robust is essential for safe passage. During the first half of the twentieth century, lamps were the primary method of guiding the way, declaring presence, enabling communication and facilitating on board activity. The distinctive fixtures prevalent on the ships of this period have recently re-emerged in antique shops, to the delight of a whole new audience. With substantial price tags to match.

To make these characterful designs more accessible, Authentic Models has recreated specific models in attentive detail. Plus we've perfected them for modern day use on dry land, by mounting them on attractive stands with suitable fittings. So you can enjoy their solidity and functionality as beautifully appealing accent lighting.



Half Mile Ray Searchlight
SL040
M. 60 x 164cm, 23.5 x 64.5"
Approved, max 40-watt

This 1930s Half Mile Ray lamp is a faithful reproduction. Mounted on a mahogany tripod, its angle adjustable with a clever piece of 1930s technology. Originally constructed to last a lifetime. Our reproduction probably will as well...



Coast Guard Patrol Spotlight
SL029
M. 65 x 180.5cm, 25.75 x 71.25"
Approved, max 60-watt

The original of this '30s Navy spotlight was bought in an antique store in Greenwich, England. Our replica is exclusive to AM, hand-crafted of brass and aluminum and meant for those who value master craftsmanship and technical skills. A great addition to our collection of spotlights and signal lamps.



Admiralty Spotlight
SL028
M. 60 x 160cm, 23.5 x 63"
Approved, max 40-watt

A genuine pièce de résistance from the Authentic Models collection, this carefully detailed aluminum and brass signal lamp is an exact replica of an item salvaged from the British Royal Navy's battle cruiser HMS Furious.



1940s Surgeon Lamp
SL042
M. 170 x x 78 x 215cm, 67 x 30.75 x 84.75"
Approved, max 40-watt

For brave soldiers injured in combat, the steadily focused lamps used in operating theatres were integral to saving their lives. Recognising the beauty in both the purpose and the construction of these lamps, we have recreated them to shine a spotlight on modern day interiors. Applying their dedicated precision to making today's world look more attractive.



Marconi Spotlight
SL039
M. 100 x 195cm, 39.5 x 76.75"
Approved, max 60-watt

Same spotlight as the SL048 but now with a smaller stand.



Marconi Spotlight II
SL048
M. 125.5 x 224.5cm, 49.5 x 88.5"
Approved, max 60-watt

International maritime communication used Morse as the standard code until 1999. Every Navy vessel carried a variety of Morse code devices on board. Our spotlight dates back to the 1930s and was likely used on an allied Navy battleship. Aluminum with brass and with moving slatted louvers.



Cinema Light
SL034
M. 77 x 158cm, 30.25 x 62.25"
Approved, max 40-watt

A fifties industrial looking spotlight that has lighted the stage of famous theatres. An entirely practical light that condenses and magnifies a fierce beam towards the stage. Handcrafted in airplane aluminum.



Marble Waves Lamp

MC285

M. Ø 22 x 66cm, 7.75 x 26"
EU Only



Anchor Lamp, Brass & Copper

SL043

M. 19 x 30cm, 7.5 x 12"

Study the details of this classic anchor lamp. Cast handle. Cast slots. Heavy copper sheet. Molded name plaques. Hand-blown glass. Kerosene burner...



Concorde Desk Lamp

SL064

M. 19 x 70 x 67cm, 7.5 x 27.5 x 26.5"
Approved, max 25-watt

A lamp for town and country. Universal appeal, in a style going back to the 1930s. Solidly constructed in brass, this lamp is built to last.



Steamer Funnel Lamp

SL069

M. 23.3 x 49 x 23.3cm,
9.25 x 19.25 x 9.25"
Approved, max 25-watt

Cassandre, the famous French graphic designer, used stark graphic funnel images for one of his most famous creations; the Statendam poster. Inspired by this early 1930s image, our hand crafted, polished steel lamp is a mix between its original art deco shape and a stylized nun's habit.



Playhouse Cinema Light

SL066

M. 32.5 x 30 x 50cm, 12.75 x 11.75 x 19.75"
Approved, max 40-watt

Our Cinema Light looks like a giant 'Jacks' game piece. Wonderful juxtaposition of parts make one harmonious whole! A superb statement fitting unusual and independent minded interiors.



Author's Desk Lamp

SL065

M. 18 x 57.5 x 41cm, 7 x 22.75 x 16.25"
Approved, max 25-watt

The many subtle details of this classic 1920s French lamp easily impress. Every facet is well executed and perfect. An intriguing, solid counterweight balances the compact, bell-like shade.



Phaeton Limo Light

SL035

M. 74 x 180cm, 29.25 x 71"
Approved, max 40-watt

A combination of polished aluminum and brass brings home 1930s style, perfection and craftsmanship. An imposing size with a travel compass dating back to the Mille-Miglia...



Searchlight 1940, Nickel and Black

SL030

M. 67 x 200cm, 26.5 x 78.5"
Approved, max 40-watt

This searchlight comes right from the bridge of a 1940s Navy destroyer. Just engineered, not designed. Form follows function. Translates into sophisticated home décor.



Campaign Tripod Lamp

SL019C

(Black Square Shade)



Campaign Tripod Lamp

SL019

(Cream Shade)

Campaign Tripod Lamp, Black

SL019B (Black Shade)

M. 80 x 128cm, 31.5 x 50.25"
Approved, max 60-watt

Tripods were left by a British surveying expedition in the twenties, mapping the deserts and hills of Yemen. We were impressed by the fact that the metal and wood, combined with saddler's leather straps, still looked fresh and new. Obviously a combination of quality and form follows function.





Main Hold Lamp
SL037
M. 50 x 51cm, 19.75 x 20"
Approved, max 60-watt

After finding the original at a Paris auction, we were spellbound with this ship's lamp. We were able to unlock the wing nuts and study the construction. Replicas are made by hand, one by one, duplicating every design and technical detail of the original. Brass and aluminum. Stainless steel hanging wires and ceiling bracket.



Venetian Lantern
SL047

M. 18 x 18 x 34.5cm, 7.1 x 7.1 x 13.6"

This solid brass candle lantern is a recreation of a 17th century Renaissance style piece, incorporating the exotic oriental designs which have inspired Italian artisans since the 11th C. While originals have become rare and costly, our copy is very affordable.



Charleston Lamp
SL067

EU only

Ø 33 x 15cm, 13 x 6"
Approved, max 60-watt

Elegantly curved offshoot of an antique port dock lantern. Ideal for dining or reading table. Complete with ceiling bracket.



Savannah Lamp
SL068

EU only

Ø 33 x 15cm, 13 x 6"
Approved, max 40-watt

Nicely molded classic French country style. All bronze finished brass, and antique copper. Complete with ceiling bracket



Steamer Deck Lamp
SL062

Ø 34 x 31cm, 13.5 x 12.25"
Approved, max 25-watt

The originals lighted the passages and corridors of early 20th C. steamships and tramp steamers. Ours can light up any space you like.



AVIATION

COLLECTION

Man has always been fascinated with conquering the skies. In 1783 this obsession became reality with the first manned balloon flight. The airship appeared 69 years later, and aeroplane flight was achieved for the first time in 1903. Each of these inventions opened up glamorous worlds of adventure and exploration. In parallel, the use of military aircraft cemented aviation's pivotal role in warfare, simultaneously posing threats and creating heroes.

Authentic Models celebrates the achievement of flight and the beauty of the various craft which have delivered it over time. We have constructed models in meticulous detail and been creative with propellers, so everybody can bring a touch of airborne adventure to their home through highly appealing decorative objects.



Concorde

AP112
M. 46 x 17.5 x 21.25cm, 18.25 x 7 x 8.5"
London-New York in 3 hours: the only supersonic passenger aircraft ever made. Recreated from original models displayed at the top travel agents.



Tornado Jetfighter

AP096
M. 28 x 17.5 x 21cm, 11 x 7 x 8.25"
The Tornado model is a detailed replica of original factory supplied models gracing the desks of top military brass offices.



1930s DC-3

AP110
M. 50 x 51 x 30cm, 19.75 x 20.25 x 11.75"
The DC3 has earned the nickname "Work-horse of the Skies". Legendary, nostalgic and utterly reliable.



Autour Du Monde

AP103A
M. 21 x 26.5 x 18cm, 8.25 x 10.5 x 7"

This 1950s Constellation is an authentic copy of a travel agent airline advertising object.



Art Deco Flight Clock

AP104
M. 35.5 x 7 x 10.5cm, 14 x 2.75 x 4.25"



New Corsair Paperweight

AP102
M. 17.5 x 17 x 15cm, 6.9 x 6.7 x 5.91"

The Corsair fighter aircraft is an excellent reminder of how collaborative perseverance wins the day. This American plane initially had difficulties landing on aircraft carriers, the deployment it was designed for. But the British Royal Navy Fleet Air Arm overcame these, and the Corsair went on to become the most capable carrier-based fighter-bomber of World War II.



WWII Mustang Desk Model

AP098
M. 15 x 16 x 16cm, 6 x 6.5 x 6.5"

This iconic aluminum Mustang is an exact copy of WWII original trench art models.



Spitfire Travel Model

AP099
M. 19 x 20 x 14.5cm, 7.5 x 8 x 5.75"

The first original models were crafted by plane mechanics stationed in isolated airfields in the British Isles.



Gloster Meteor 1945

AP097
M. 15.5 x 16.5 x 14.5cm, 6.25 x 6.5 x 5.75"

The Gloster Meteor was the first British jet fighter. Not sophisticated but proven to be a successful combat fighter.



• hand applied globe gores

On Top of the World

AP108
M. 22 x 26.5 x 31cm, 8.75 x 10.5 x 12.25"

From an era when one could travel the world in style!



Propeller Desk Clock

AP111
M. 30.5 x 9.5 x 5.5cm, 12 x 4 x 2"



Desktop DC-3

AP105
M. 27 x 36 x 17.5cm, 10.75 x 14.25 x 7"

Nostalgic and perfect replica of an early travel agent advertising sign.



Spitfire

AP456

M. 60.5 x 75.5 x 17cm, 24 x 29.75 x 6.75"

The legendary Spitfire fighter was introduced in 1936 as a short-range, high-performance and single-seat aircraft. Beloved by pilots it still has a an iconic status. Our model has unbelievable details like retractable main wheels, sliding cockpit window and functioning tail rudder. Shipped with an aluminum stand with plaque.



Stand included
US and EU Only

- fully detailed cockpit
- includes plaque on stand
- flat metal sheet attached to lightweight frame
- functioning ailerons and tail rudder



WWII Mustang

AP459

M. 66 x 75 x 25cm, 26 x 29.5 x 10"

The P-51 Mustang was the first US built fighter in action after the fall of France, successfully engaging every airborne opponent. Fast, powerful, and maneuverable, with 75-gallon tanks under each wing, its ability to fly 6-hour missions was unheard of at the time.



Stand included
US and EU Only

- metal sheet covering, attached to lightweight frame
- fully detailed cockpit, sliding cockpit cover
- retractable main wheels
- unique historical plaque



NEW SPRING 2018

Constellation

AP458

M. 69 x 75 x 13cm, 27.2 x 29.6 x 5.1"

Sleek and powerful, Constellations set a number of speed and distance records, despite experiencing frequent motor problems which led to them being jokingly called the most reliable three engine aircraft. The plane's elegant appearance was the result of no two bulkheads being the same shape. A design which has long since been superseded by cheaper, more pressure-change-resistant tube constructions.



Stand included
US and EU Only





Stand included
US and EU Only

Ford Trimotor

AP452

M. 67 x 102 x 20cm, 26.25 x 39.75 x 7.75"

Only 199 Trimotors were ever built. Today, just 8 remain airworthy. Yet this quirky aircraft, with its externally mounted engine gauges which pilots could only check by looking out of the window, left unique marks in history. In 1929, the Trimotor was the first plane to fly over the South Pole. And in 1932 Franklin Roosevelt flew in one during his 1932 presidential campaign, in one of the first uses of aircraft in an election.



Stand included
US and EU Only

Junkers JU-52 'Iron Annie'

AP454

M. 67 x 98 x 26cm, 26.5 x 38.5 x 10.25"

This plane offered reliable service and great cargo capacity. Popular for its comfort and with Bauhaus tubular seats, heating and onboard information systems. AM's edition is a fully metal built scale mode and it's expected that its future value will be many times its current cost.



Stand included
US and EU Only

Dakota DC3

AP455

M. 64.5 x 97 x 17cm, 25.5 x 38.25 x 6.75"

The legendary workhorse of the skies during the 1930-50s of which some are still flying. We offer a hand-built model in aluminum, complete with etched metal sheets, lovely engine details and steady landing gear. Inspect and admire!



Spirit of St. Louis

AP250

M. 31 x 49.5 x 9cm, 12.25 x 19.5 x 3.5"

It was this plane that took Charles Lindberg across the Atlantic. With detailed cockpit.

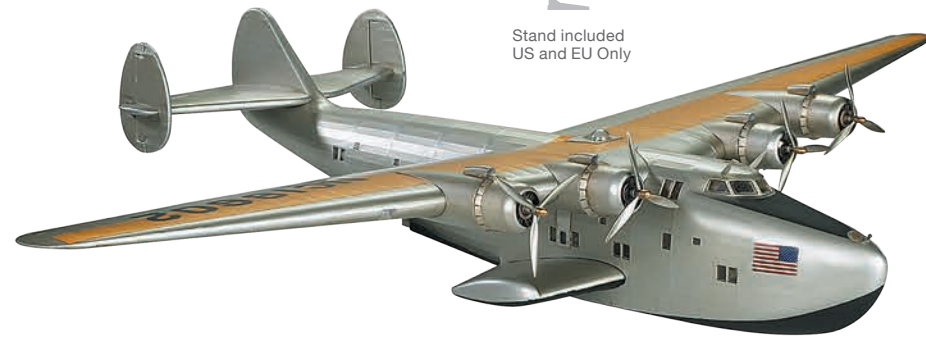


Zeppelin 'Hindenburg'

AP171

M. 165 x 34 x 36cm, 65 x 13.5 x 14.25"

An oversized model of an oversized craft. See its details: engine pods, bridge, windows, markings, taut fabric stretched over frame.



Stand included
US and EU Only

Dixie Clipper

AP451

M. 57.5 x 80 x 14cm, 22.75 x 31.5 x 5.5"

It was 1939 when PanAm received the first Boeing 314, the ultimate in luxury aircraft. Complete with sleeping berths and a real dining salon, it was the biggest plane of its time, carrying 74 passengers. The big flying boats were replaced after the war by land-based planes. Our model is covered with fabric, has transparent portholes and detailed engines.



Sopwith Camel, Small

AP243

M. 26 x 38 x 12.5cm, 10.25 x 15 x 5"

Sopwith Camel, Medium

AP402

M. 50 x 75 x 24cm, 19.75 x 29.5 x 9.5"

Sopwith Camel, Large

AP502

M. 102 x 150 x 45.5cm, 39.75 x 58.5 x 17.75"

Sopwith Camel, Extra Large

AP602

M. 250cm, 98.5", Call for availability.

The Sopwith was the mainstay fighter-plane of the British and USA air forces in the early 1900s. Brightly painted in various national colors, it ruled the skies for a number of years.



Spad XIII

AP413

M. 60 x 76 x 23cm, 23.5 x 30 x 9"

- a lightweight frame is assembled and silk fabric is stretched across, similar to the original construction in the early 1900s



Spad XIII French

AP413F

M. 60 x 76 x 23cm, 23.5 x 30 x 9"

This allied WWI Spad, nicknamed Vieux Charles, is a true miniature replica of Guynemer's plane, still revered in France today.

Our transparent model will sell to people who want an interesting, intricate piece of home décor. A striking object, beautifully made and showing its construction in detail.



Transparent Spad

AP413T

M. 60 x 76 x 23cm, 23.5 x 30 x 9"





New Sopwith Camel, Small, White
AP243W

M. 38 x 26 x 12.5cm, 15 x 10.2 x 4.9"

Incredibly detailed desktop Sopwith Camel in trendy white. Spoke wire wheels, rotary engine, laminated propeller

- laminated wood propellers
- spoke wheels with rubber tires



Fokker Triplane
AP203

M. 38.5 x 47 x 19cm, 15.25 x 18.5 x 7.5"

Desktop model of the legendary Red Baron's own plane. An icon of early flight.



Flying Circus Jenny, Medium
AP400

M. 51 x 80 x 18cm, 20 x 31.5 x 7"

Jennies conquered the nation after the close of WWI. Stunts, sightseeing by the half hour, postal and even circus flights taking off.

- admire cockpit details, leather covered chairs, instruments
- metal struts and engine covers



Jenny JN-7H Classic Barnstormer, Medium
AP401

M. 51 x 80 x 18cm, 20 x 31.5 x 7"

186cm 73.25" PROPELLERS

M. 186 x 15 x 9cm, 73.25 x 6 x 3.5"

- all propellers are handmade in solid wood



WWI Wood Propeller
AP155



Vintage Flight
AP158



WWI Vintage
Propeller, Large
AP155F



Sopwith Propeller
AP159

At one time flight was all about wood and canvas, and accomplished with basically one handle to pull and a couple of gauges to check. Wood propellers used to be replaced as often as tires and old ones were usually taken home to be transformed into memorabilia like a clock, for example. Our assortment of early flight artifacts dates back to a time when pioneers conquered the air. All propellers are sculpted in wood, distressed and finished in an aged, smooth patina. Fascinating home décor.

120cm 47.25”
PROPELLERS

M. 120 x 10.5 x 6 cm, 47.25 x 4 x 2.25”



WWI Vintage
Propeller, Small
AP150

Sopwith Propeller,
Small
AP149

WWI Wood Propeller, Small
AP150

WWI Laminated Propeller with Clock
AP154



Small Propeller, 4 Blade
AP142

M. 70cm x 70cm x 5cm, 27.58 x 27.58 x 1.97”

You don't need a room as big as an aircraft hangar to appreciate this charming wall decoration. Just the thing to give smaller spaces a feel of the open skies.



Barnstormer # 1
AP145

Barnstormer # 2
AP146

Barnstormer # 3
AP147
M. 120 x 13.5 x 6.5cm, 47.25 x 5.5 x 2.75”

Baby Prop, Gold/Red
AP143
M. 70 x 8 x 4.5 cm, 27.5 x 3.25 x 1.75”

Barnstormer Rack
AP148
M. 15 x 14 x 9cm, 21.75 x 5.5 x 3.5”

Baby Prop, Ivory/Black
AP144
M. 70 x 8 x 4.5 cm, 27.5 x 3.25 x 1.75”



Helium balloons were one of aviation's first successes. Since 1783, balloons have traveled the skies, often in unintended directions. Hand applied balloon strips. Hand woven netting and basket. Wooden toggles and sand bags.

- hand cut and hand applied paper gores cover a lightweight spherical core
- custom printed colors
- rope loops in balloon top for hanging

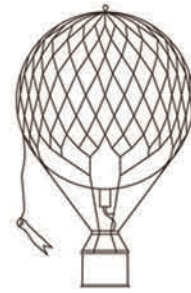


Ø 8.5cm Balloons

Floating the Skies

AP160D Blue
AP160E Rainbow
AP160F Rainbow Pastel New
AP160G True Green
AP160K Black *
AP160L Lavender*
AP160M Mint New
AP160P Pink*
AP160R True Red
AP160Y True Yellow

Ø 8.5 x 13cm, 3.25 x 5"

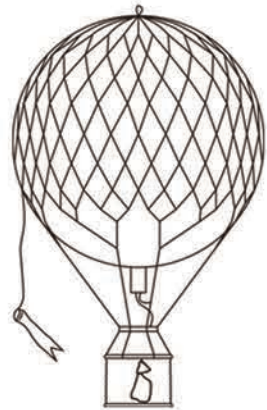


Ø 18cm Balloons

Travels Light

AP161D Blue
AP161E Rainbow
AP161F Rainbow Pastel New
AP161G True Green
AP161K Black*
AP161L Lavender*
AP161M Mint New
AP161P Pink*
AP161R True Red
AP161Y True Yellow

Ø 18 x 30cm, 7 x 11.75"

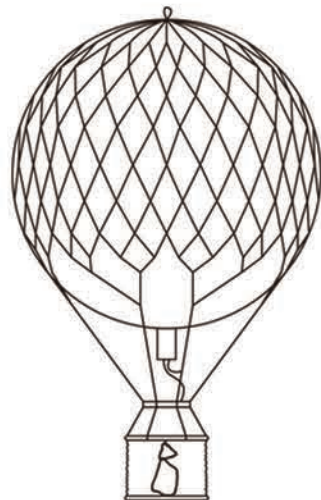


Ø 32cm Balloons

Royal Aero

AP163D Blue
AP163E Rainbow
AP163F Rainbow Pastel New
AP163G True Green
AP163K Black*
AP163L Lavender*
AP163M Mint New
AP163P Pink*
AP163R True Red
AP163Y True Yellow

Ø 32 x 56cm, 12.5 x 22"



Ø 42cm Balloons

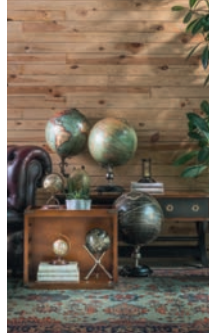
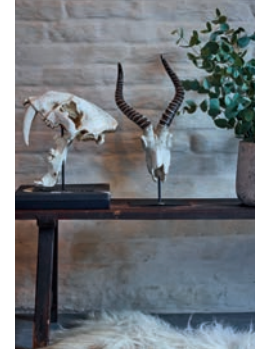
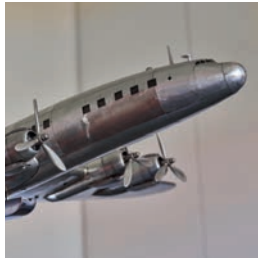
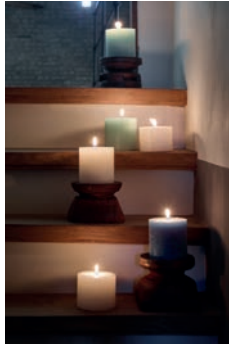
Jules Verne Balloon

AP168E Rainbow
AP168F Rainbow Pastel New
AP168G True Green
AP168M Mint New
AP168R True Red

Ø 42 x 70cm, 16.5 x 27.5"

*Special request





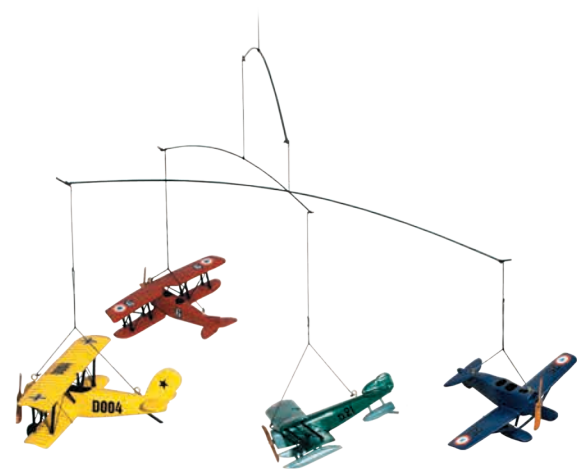




GIFTS COLLECTION

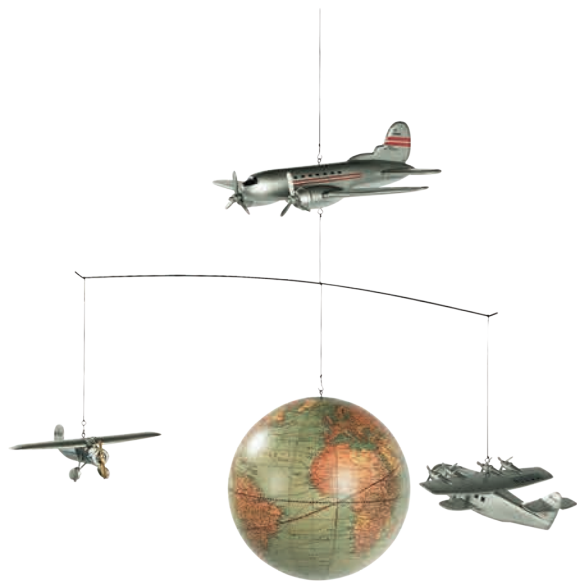
Authentic Models' dedication to recreating the past's most fascinating objects opens up plentiful opportunities to give gifts with meaningful back-stories. We have unearthed historic detail, revived old designs and occasionally added our own contemporary twists to bring treasured quality, beauty and distinctive charm to 21st century lives.

While some of our offerings are true replicas, others are modern day interpretations. All are expertly crafted to truly impress those lucky enough to receive them. Or maybe they are just too appealing to part with?



Flight Mobile, 1920
 AP120
M. 66 x 58.5 x 30.5cm, 26 x 23 x 12"

Stainless steel wires and nylon line keep planes in constant graceful motion.



Around the World Mobile
 Ap124
M. 34.5 x 66 x 40cm, 613.5 x 25 x 15.75"

Three wooden planes gracefully glide around our 1920s globe.

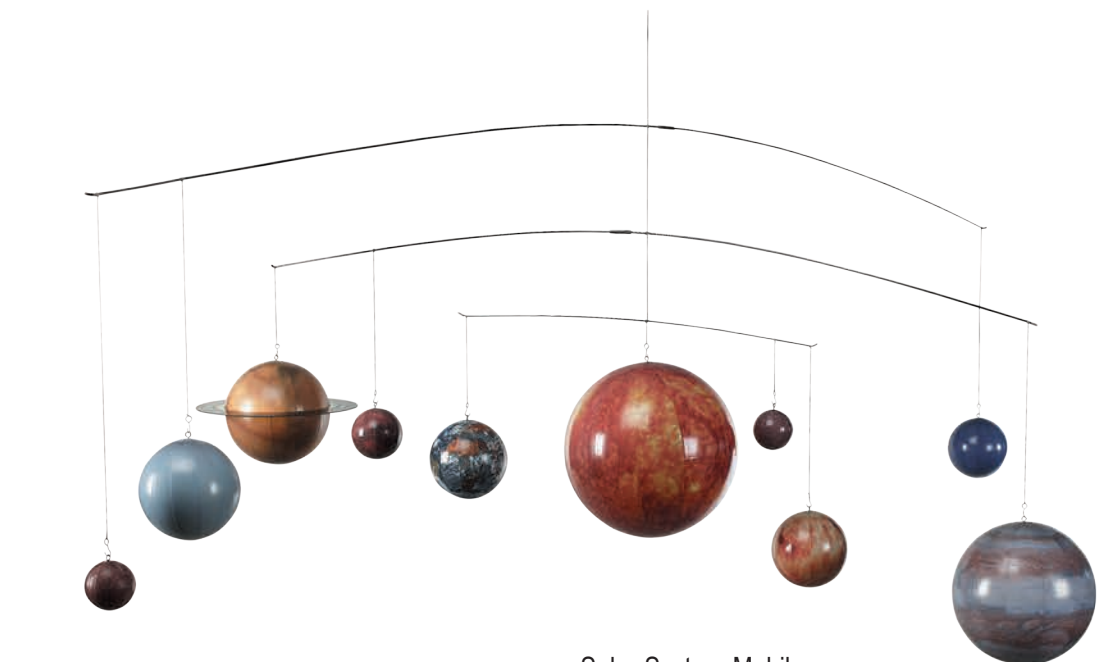


Flying Skies Mobile, Primary
 AP128
M. 85 x 8.5 x 66.5cm, 33.5 x 3.5 x 26.25"

These balloons are as fascinating today as they were a century ago!

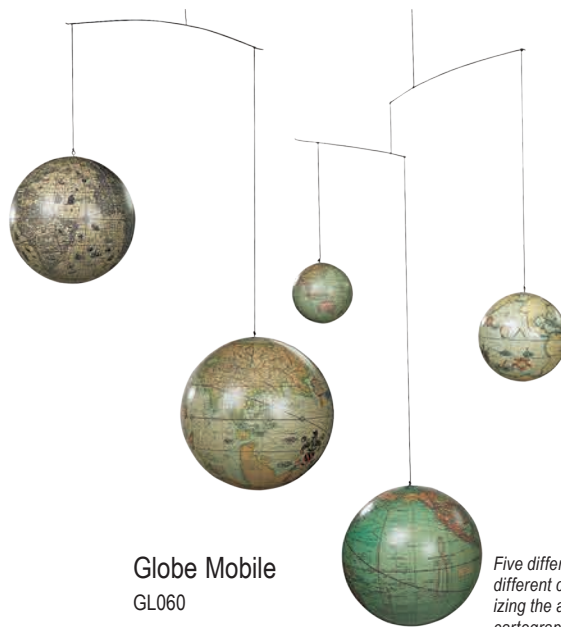


Flying Skies Mobile, Pastel
 AP129
M. 85 x 8.5 x 66.5cm, 33.5 x 3.5 x 26.25"



Solar System Mobile
 GL061
M. 51 x 135 x 45cm, 20 x 53.25 x 17.75"

It's easier to understand our universe when viewing the solar system on a smaller scale. This mobile will fascinate the young in age and youthful in heart.



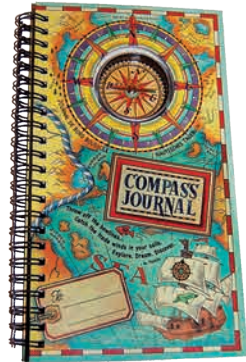
Globe Mobile
 GL060
M. 108 x 18 x 90cm 42.5 x 7 x 35.5"

Five different globes from five different centuries, symbolizing the advancement of cartography.



A-Cup Mobile
 AS130
M. 93 x 3.5 x 32cm, 36.5 x 1.5 x 12.5"

Four colored 1934 J-Yachts miniatures made of solid wood and cotton sails.



Compass Journal
MS010A

M. 13 x 20.5 x 2cm, 5 x 8 x 0.75"



Mariner's Compass
MS013A

M. 9.5 x 10 x 3cm, 3.75 x 4 x 1.25"



Three Boats in a Box Kit
MS015A

M. 11 x 12.5 x 4cm, 4.25 x 5 x 1.5"

Build your own fishing fleet. Add signal flags for a fun, finishing touch.



Pocket Sundial Compass
MS019A

M. 11 x 11 x 1.5cm, 4.25 x 4.25 x 0.75"

Our version of the earliest time telling methods. Find a sunny day and have some fun.



Message in a Bottle
MS053A

M. 20.5 x 6.2 x 6cm, 8 x 2.5 x 2.25"



It's a Toss Up
MS054A

Ø 14 x 6cm, 5.5 x 2.25"

Three hand-stitched professional juggling balls, inviting you to toss 'em up.



Pirate's Treasure
MS057A

M. 15.5 x 10 x 9.5cm, 6 x 4 x 3.75"

Build a pirate's galleon. Includes a treasure map.



Work the Strings
MS063

M. 18.5 x 16.5 x 2.5cm, 7.25 x 6.5 x 1"



Traveler's World Globe in Box
MS021A

Ø 10 x 8.8cm, 4 x 3.5"
EU Only



Boat in a Bottle Kit
MS022A

M. 14.5 x 12 x 7cm, 5.75 x 4.75 x 2.75"



A-B-Seas Stamp Set
MS050A

M. 11 x 14 x 6cm, 4.25 x 5.5 x 2.25"



Billy Bosun's Stamps/Stationer
MS070A

M. 14 x 10.5 x 6cm, 5.5 x 4.25 x 2.25"



Learn The Ropes
MS071A

M. 13.75 x 11.75 x 2.5cm, 5.5 x 4.75 x 1"



Kaleidoscope Kit
MS073A

M. 21.5 x 6.5 x 6.5cm, 8.5 x 2.5 x 2.5"



Fortune Sticks
MS076

M. 7.25 x 17.75cm, 2.75 x 7"



New Monkey Fist Doorstop, Cotton
HD001
M. 20 x 20 x 22cm, 7.9 x 7.9 x 8.7"

The 'monkey fist' knot, named for its resemblance to a bunched hand, was developed as a weight to make it easier to throw ropes. Our perfectly constructed hemp example is also ideal for holding doors open. Available in white or straw.



New Monkey Fist Doorstop, Sisal
HD002
M. 20 x 20 x 22cm, 7.9 x 7.9 x 8.7"



Bosun's Whistle
BW001
M. 13 x 2 x 1cm, 5 x 0.75 x 0.5"
Gift packaged

"All hands on deck" was one of the commands blown by the Bosun's Mates on this whistle or "call".



Victorian Whistle
BW002
M. 5 x 2 x 2cm, 2 x .75 x .75"
Gift packaged

Hand crafted brass whistle, faithful replica of Victorian original.



White Star Call
BW003
M. 5 x 2 x 2cm, 2 x .75 x .75"
Gift packaged

The White Star Shipping Line was the owner of the legendary Titanic. Our little bosun's whistle is small in size, but carries a big sound.



Madeira Y9, Red
AS140F
M. 45 x 8.5 x 42cm, 17.75 x 3.5 x 16.5"



Madeira Y3, Honey
AS141F
M. 45 x 8.5 x 42cm, 17.75 x 3.5 x 16.5"



Madeira Y6, Blue
AS142F
M. 45 x 8.5 x 42cm, 17.75 x 3.5 x 16.5"



Green Sailer, H03
AS186
32.5 x 8 x 40.5 cm, 12.75 x 3.25 x 16"



Red Sailer, LR5
AS187
32.5 x 8 x 40.5 cm, 12.75 x 3.25 x 16"



Blue Sailer, MA8
AS188
32.5 x 8 x 40.5 cm, 12.75 x 3.25 x 16"

These three brightly colored sailers remind one of hand carved models made by fishermen in the many French ports.



Signal Pennant #1
CC014
M. 70.8 x 50cm, 28 x 19.75"
EU Only



Signal Pennant #3
CC016
M. 70.8 x 50cm, 28 x 19.75"
EU Only



Signal Pennant #2
CC015
M. 70.8 x 50cm, 28 x 19.75"
EU Only



Signal Pennant #4
CC017
M. 70.8 x 50cm, 28 x 19.75"
EU Only



Saskatchewan Canoe
AS185
M. 100 x 15.5 x 20cm, 39.5 x 6.25 x 8"
US Only

Hand built reproduction of a canoe that once navigated the rivers and lakes of North America.



Sail Model 1901, Blue/Green
AS050
M. 109 x 16 x 108cm, 43 x 6.25 x 42.5"

This classic pond yacht showcases an era when children grew up with real, hands-on objects to play with and learn from.



Sail model Defender, 1895
AS055A
M. 93 x 14 x 89cm, 36.5 x 5.5 x 35"

Solid wood deck, wood strip built hull in classic shape.



Mini Pond Yachts, Set of 4
AS057A
M. 51 x 8 x 50cm, 20 x 3.25 x 19.75"



Sunset Sailors, Set of 4
AS170
M. 28 x 7.5 x 40.5cm, 11 x 3 x 16"

Our wood hand built flotilla of four sailing dinghies features fresh, bright and sunny colors.



Baby Skyhook Rocket
TM136
M. 7 x 10.5 x 16.6cm, 2.76 x 4.14 x 6.5"



Baby Skyhook Train
TM140
M. 7 x 12.5 x 16.5, 2.76 x 4.93 x 6.5"



Baby Skyhook Boat
TM138
M. 7 x 10.5 x 21.5cm, 2.76 x 4.14 x 8.47"



Baby Skyhook Helicopter
TM137
M. 7 x 12.5 x 16.5cm, 2.76 x 4.14 x 6.5"



Baby Skyhook Airplane
TM139
M. 7 x 12.5 x 16.5cm, 2.76 x 4.93 x 6.5"



Mermaid
TM029
H. 50cm, 19.75"



Great Plains
TM011
H. 50cm, 19.75"



Balance Toy Signal Sailor
TM034
*H. 56cm, 22"
EU Only*



Aida Skyhook
TM123
H. 59.75cm, 23.5"



Salty Dog
TM036
H. 45cm, 17.75"



Helmsman
TM050
H. 52cm, 20.5"



Pirate
TM040
M. 41cm, 16.25"



Snow Wall Bracket
TM052
*M. 20cm, 8"
Sky hook sold separately*

Gadgets inspired by science were popular in Victorian times. Optical illusions and the laws of gravity seemed magical in that era. Skyhooks could be set on a shelf or the rim of a table and set in motion to everybody's delight and amazement.



Princess
TM125

H. 50.5cm, 20"



Knight
TM126

H. 54cm, 21.25"
US Only



King
TM113

H. 61cm, 24"



Knight
TM111

H. 54cm, 21.25"
EU Only



Flying Ace
TM074

H. 50cm, 19.75"
US Only



Dancing Elephant
TM099

H. 67cm, 26.25"
EU Only



Golfer
TM100

H. 56cm, 22"
EU Only



Strike Out
TM103

H. 54cm, 21.25"
EU Only



Acrobat
TM129

H. 61cm, 24"



Alice in Wonderland
TM117

H. 57cm, 22.5"
EU Only



Queen of Hearts
TM119

H. 57cm, 22.5"
EU Only



White Rabbit
TM120

H. 57cm, 22.75"
US Only



Cheshire Cat
TM127

M. 49.5 cm, 19.5"
US Only



Touch Down
TM104

H. 57cm, 22.5"
EU Only



Pierrot
TM106

H. 67.5cm, 26.5"



Rope Walker
TM107

H. 66.5cm, 26.25"
EU Only



Jester
TM115

H. 61cm, 24"



Clown
TM116

H. 66cm, 26"
US Only



New

Travel Barber Box

HA013

M. 21.5 x 14x 10cm, 8.5 x 5.5 x 3.9"

A beautiful hand-distressed, vintage-look gentleman's grooming box. Inspired by historical travel kits, now a feature piece for stylish bathrooms.



New

Wooden Candle Holder, Assortment

HA021

M. 15 x 15 x 13cm, 5.9 x 5.9 x 5.1"

Lovers of all things nautical will adore these beautiful candle holders, which have been fashioned out of wooden pulleys salvaged from sailing ships.



New

Wooden Spice Tray

WD019

M. 81.5 x 34 x 5.5cm, 32.1 x 13.4 x 2.2"

Originally created to store printing press letters, these wooden trays have discovered a second life as display storage for souvenirs and special ornaments. Our attractively aged representation is perfect for those with a passion for collecting small objects.



New

Natural Wooden Bowls, Set of 3

HA018

M. 36 x 36 x 9cm, 14.2 x 14.2 x 3.5"

M. 42 x 42 x 2cm, 16.5 x 16.5 x 3.9"

M. 46 x 46 x 12cm, 18.1 x 18.1 x 4.7"





Cape Horn Anchor
AC006
M. 15.5 x 11 x 9.5cm, 6.25 x 4.5 x 3.75"

Gone for months or even years the return of sailors was a joyful occasion. To announce a safe homecoming a small iron or brass anchor was displayed next to the family cottage entrance.



Monkey's Fist/Shackle
FW003
M. 12 x 3 x 4cm, 4.75 x 1.25 x 1"

Expert ditty work this one, made by fishermen in off-season.



New Deck Prism, Green
AC032
M. 12.5 x 12.5 x 11cm, 4.9 x 4.9 x 4.3"



New Deck Prism, Transparent
AC032T
M. 12.5 x 12.5 x 11cm, 4.9 x 4.9 x 4.3"



Palette For Pens 2
MG083
M. 23.5 x 9 x 7cm, 9.25 x 3.5 x 2.75"

Six classic ink colors,
two glass styluses



Windsor Travel
MG127
M. 7.5 x 29.25 x 8cm, 3 x 11.5 x 3.25"



Feather Pen Set
MG118
M. 8.5 x 25.5 x 6.5cm, 3.25 x 10 x 2.5"



Campaign Lap Desk
MG076F
M. 40.5 x 25.5 x 10cm, 16 x 10 x 4"

French finish distressed, bronze hinges, secret hiding spots and special place for inkwells and styluses. A classic campaign accessory.



Trianon Travel
MG128
M. 18.5 x 26.5 x 6.25cm, 7.25 x 10.25 x 2.5"

Enjoy our writing instruments to write real letters that impart both romance and a talent for perception along with a turn of phrase.



Colorful Prose
MG084
M. 23.5 x 9 x 7cm, 9.25 x 3.5 x 2.75"

Twelve classic ink colors,
two glass styluses



Windsor Prose
MG029
M. 7.5 x 29.25 x 8cm, 3 x 11.5 x 3.25"



Trianon Letters
MG059
M. 15.5 x 36.75 x 6.25cm, 6 x 14.5 x 2.5"

Enjoy the power of the written word. French finish boxes filled with inks, styluses, nibs, seal wax, sealing tools, brass and wood seals. A writer's dream.





INDEX

Armillary's 73
Balloons 60, 61
Bars 12 - 15
Bookcases 26 - 28, 30, 31
Cabinets 23 - 26
Cars 80, 81
Chairs 34 - 36
Classic decor 82 - 88
Compasses 110 - 112
Desk lamps 42
Desks 20 - 23
Desktop planes 48, 49
Dressing 29
Education 118, 119

Floor lamps 40, 41, 43
Games 98, 99
Globes 72 - 77
Globe stands 77
Hanging lamps 44, 45
Hospitality 95 - 97
Magnifiers 106, 107
Mirrors 90 - 92
Mobiles 116, 117
Modern decor 89
Nautical fun 120, 121
Oars 68, 69
Plane models 50 - 56
Poufs & benches 36, 37

Propellers 57 - 59
Runabouts 66
Sailing ships 64, 65
Skyhooks 122 - 125
Steamers 66, 67
Stools 34 - 37
Sundials 112
Tables 16 - 19
Telescopes 108, 109
Time 102 - 105
Vintage 126, 127
Weather 112, 113
Writing 128, 129



CONTACT

HEAD OFFICE

The Netherlands
Ambachtsweg 37
3899 AM Zeewolde
Phone +31-(0)36-52 19 191
Fax +31-(0)36-52 19 170
sales.eu@authenticmodels.com

SALES OFFICES EUROPE

BELGIUM
AM Belgium
Phone +32-(0)2-24 56 750
am-belgium@authenticmodels.com

FRANCE
AM France
Phone +31-(0)36-52 19 197
am-france@authenticmodels.com

GERMANY
AM Germany
Phone +31-(0)36-52 19 173
sales.eu@authenticmodels.com

ITALY

AM Italy
Phone +39-(0)35-910 827
am-italy@authenticmodels.com

SPAIN

AM Spain
Phone +34-93 81 24 366
am-spain@authenticmodels.com

SWEDEN

AM Sweden
Phone +46-176 22 21 90
sales.eu@authenticmodels.com

SWITZERLAND

AM Switzerland
Phone +41-792 21 19 56
sales.eu@authenticmodels.com

UNITED KINGDOM

AM UK
Phone +44-(0)1403-734 999
am-uk@authenticmodels.com

SALES OFFICE UNITED STATES

888 Garfield Street
P.O. Box 21710 Eugene,
OR 97402
Phone 541-686-4666
Toll-Free 800-888-1992
Fax 541-686-5111
sales.usa@authenticmodels.com

Showroom USA

Space 1201 A,B
40 John Portman Blvd. NW
Atlanta, Georgia 30303

SALES OFFICE AUSTRALIA

AM Living Australia
Ground Floor
390 Mount Alexander Road Ascot Vale
VIC3032 Australia
Phone 61-03-9326-0140
info@amliving.com.au

JOIN US ONLINE

instagram.com/authentic.models
facebook.com/AMAuthenticModels
pinterest.com/am7394

#AUTHENTICMODELS

SHARE YOUR FAVORITES WITH US

AUTHENTICMODELS.COM

Visit our new website and stay informed
of the latest collection.

Copyright

No part of this publication may be reproduced in any manner of form whatsoever without the prior written permission of Authentic Models and other copyright holders. No rights can be derived from this publication.

Disclaimer

Authentic Models BV makes every effort to maintain the accuracy and quality of the information provided in this catalogue. However, Authentic Models cannot guarantee and assumes no legal liability or responsibility for the accuracy or completeness of the information provided.

It is important to bear in mind that the colours shown in this catalogue may not be accurate representations of the actual colours of the items. The colour reproduction in this catalogue should only be used as a rough guide for selecting item colours.

Unique products

Some products in the Authentic Models collection are handcrafted from natural materials. This means products are rarely completely identical and may show variance in colour, size or finish. We believe this aspect adds to the value and quality of these products. Small irregularities in shapes, surfaces and finishes are hallmarks of hand-craftsmanship and should not be considered defects.



GLOBES

COLLECTION

The world we are familiar with today is very different to how people believed it to be in the past. As explorers discovered new territories and countries laid claim to them, there was a repeated need to re-map everything. With this, the incredible art of globe-making thrived. Achieving accuracy and intricate detail required painstaking work, hand-gluing copperplate-printed gores onto a plaster-finished papier-mâché core. As new knowledge was amassed, old versions became outdated. Yet their stunning beauty and historical significance retains timeless appeal.

Authentic Models is proud to be renowned as a world leader in antique globe reproduction, replicating the complex gravure printing technique which results in the sharpest lines, words and symbols even on the smallest object. Our collection represents five centuries of globe development by some of the greatest names in cartography, tastefully mounted on sympathetically designed stands to bring old world charm into even the most modern of settings.

Mercator Globes

Hand applied gores reproduced from the famous Dutch cartographer, Gerardus Mercator's engraved charts from 1541. Made in cooperation with the Royal Library in Bruxelles. Scientific, decorative, historical...



Mercator 1541
Classic Stand
GL002D
Ø 34.5 x 61cm, 13.5 x 24"



Globe Bookends
GL009F
Ø 8.5 x 10.5cm, 3.25 x 4.25"



Terrestrial Globe with Compass
GL019
Ø 14.5 x 21cm, 5.75 x 8.25"



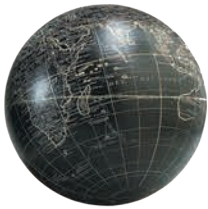
Navigator's Terrestrial
Globe, French Finish
GL023F
Ø 26.5 x 29.75cm, 10.25 x 11.75"



The Earth & The Heavens 1551
GL032
M. 55 x 55.5 x 85.5cm, 21.75 x 22 x 33.75"
Gift Packaged



Desktop Globe
GL042
Ø 11 x 19.5cm, 4.25 x 7.75"



Mercator 14cm, Black/Ivory
GL211
Ø 14cm, 5.5"

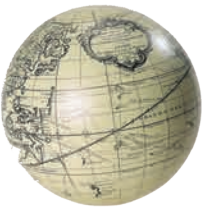
Mercator 18cm, Black/Ivory
GL311
Ø 18cm, 7"



Mercator 14cm, Red/Ivory
GL214
Ø 14cm, 5.5"



Mercator 14cm, Blue/Ivory
GL216
Ø 14cm, 5.5"
EU Only



Mercator 14cm, Ivory/Black
GL212
Ø 14cm, 5.5"

Mercator 18cm, Ivory/Black
GL312
Ø 18cm, 7"



Mercator 14cm, Ivory/Red
GL215
Ø 14cm, 5.5"



Mercator 14cm, Ivory/Blue
GL217
Ø 14cm, 5.5"
EU Only



18th C. Atlas Armillary
GL051
Ø 25.5 x 56cm, 10 x 22"

Our armillary dial has Atlas carrying the entire universe. That's to say the known Renaissance universe, when the earth was still believed to be at its center. Gracefully intertwined silver rings symbolize the position and trajectories of heavenly bodies around the earth. In all aspects ethereal, science combined with beauty, myth with historic fact.



Bronze Armillary Dial
GL052
Ø 18.5 x 36.5cm, 7.5 x 14.5"

Early man believed that the stars were fixed to the inside surface of a rotating sphere. Copernicus gave his name to the theory of an Earth-centered universe. We now know that we live on the fringe of a nearly infinite and ever expanding universe. Armillary dials have the earth positioned inside a mesh of bronze hoops, symbolizing the course of the planets as known at the time. The course of the sun is shown by a wide band called the ecliptic circle.



Vaugondy 1745
Classic Stand
GL008D
Ø 34.5 x 61cm, 13.5 x 24"



Vaugondy Globe 1745
GL021F
Ø 14 x 29.5cm, 5.5 x 11.75"



Vaugondy Globe 1745, Small
GL027
Ø 8.5 x 9cm, 3.25 x 3.5"
Gift Packaged



Library Globe
GL047
M. 48 x 48 x 96cm, 19 x 19 x 37.75"

No Renaissance library, reception room, or merchant's office was complete without a large globe on a stand. Mapmakers and globe publishers issued new globes every year, keeping clients up to date on the latest discoveries and explorations. New trade routes, new ports or even new continents.



Atlas Globe
GL049
M. 18.5 x 20 x 34cm, 7.25 x 8 x 13.5"



Vaugondy Baroque
GL048
Ø 32 x 55cm, 12.75 x 21.75"



Vaugondy 1745, Black
GL041
Ø 32 x 50cm, 12.5 x 19.75"



Vaugondy 14cm
GL213
Ø 14cm, 5.5"



The Age of Exploration
GL031
Ø 8.5 x 10.5cm, 3.25 x 4.25"
Gift Packaged



Griffion Globe
GL053
M. 18.5 x 18.5 x 39.5cm, 7.25 x 7.25 x 15.5"



Trianon Globe
GL045
Ø 14 x 27.5cm, 5.5 x 11"





Versailles Globe
GL044
Ø 14 x 26.25cm, 5.5 x 10.25"



3-Leg Globe Stand
GL033
Ø 12.25 x 15cm, 4.75 x 6"
8.5cm globe sold separately



Stand for Globe
GL000
Ø 11 x 17.5cm, 4.25 x 7"
8.5cm globe sold separately



Weber Costello Globe
GL036
Ø 32 x 50cm, 12.5 x 19.75"



Globe Base, Wood
GL200
Ø 11 x 1.5cm, 4.5 x .75"
14 or 18cm globe sold separately



Weber Costello 18cm
GL313
Ø 18cm, 7"



Globe Base, Aluminum
GL200A
Ø 11 x 1.5cm, 4.5 x .75"
14 or 18cm globe sold separately



1921 USA Globe Weber Costello
GL026
Ø 34.5 x 61cm, 13.5 x 24"



Globe Base, Bronze
GL200B
Ø 11 x 1.5cm, 4.5 x .75"
14 or 18cm globe sold separately



Tripod Stand
GL300A
M. 16 x 15.5 x 20cm, 6.25 x
14 or 18cm globe sold separately

Great accessory to hold
any of our small globe
keepsakes as it can
be put in two
different positions.

Hondius Globes

Legendary cartographer, Jodocus Hondius, worked in Amsterdam during the 1600s, then one of the world's commercial hubs. Spin the world and enjoy a touch of true history. Galleons sailing oceans to the farthest corners of the then known world. Exotic cultures, languages, people and goods to be traded, bought and sold. Gold and ivory, spices and silks. The Old World at your fingertips...



Old World Globe Stand
GL046
Ø 36 x 55cm, 14.25 x 21.75"



Hondius 1627 Classic Stand
GL003D
Ø 34.5 x 61cm, 13.5 x 24"



Dragon Globe
GL054
M. 33 x 32 x 53.5cm, 13 x 12.75 x 21"



New
1920s Globe 32 cm
GL043
M. 32 x 32 x 50cm, 12.6 x 12.6 x 19.7"

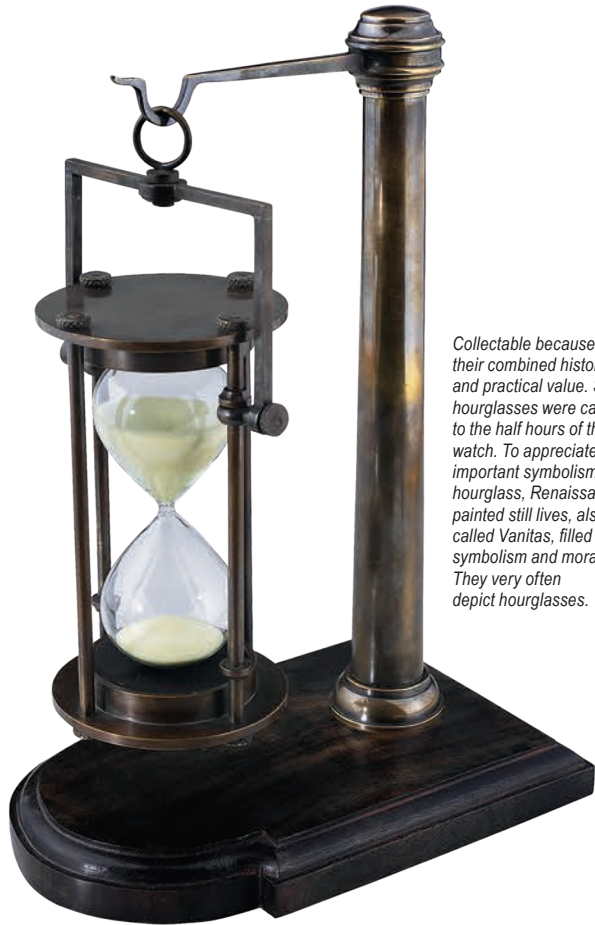


INSTRUMENTS

COLLECTION

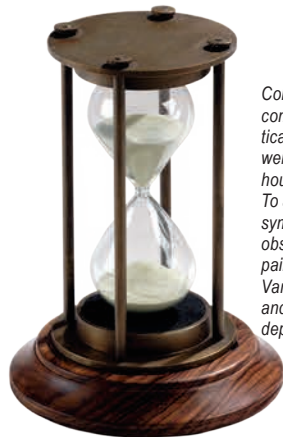
Before the technological revolution, those who travelled the world by sea were dependent on accurately calibrated physical instruments to safely navigate their way. At the mercy of the tides, the weather and the earth's rotation, mastering the great oceans called for skilful use of a whole range of tools, which were robustly constructed to withstand the rigours of life on the ocean waves.

Authentic Models revisits the world of 18th and 19th century explorers with accurate working replicas of the compasses, visual aids, time-pieces and weather measuring devices they used. Beautifully crafted objects which let you have a go at manually identifying your position and situation, as well as being great talking points and impressive ornaments.



Bronzed 30 Minute Hourglass-Stand
HG008
M. 18.5 x 13 x 25.5cm, 7.25 x 5 x 10"

Collectable because of their combined historical and practical value. Ship's hourglasses were calibrated to the half hours of the ship's watch. To appreciate the important symbolism of the hourglass, Renaissance painted still lives, also called Vanitas, filled with symbolism and morals. They very often depict hourglasses.



Bronzed 30 Minute Hourglass
HG007
Ø 8 x 13.5cm, 3.25 x 5.25"



Brass 3 Minute Sandglass
HG001
Ø 3.5 x 9.5cm, 1.5 x 3.75"

The pocket glass of the boatswain. Used to measure ship's speed, counting knots, timing minutes. A small gift with big presence.



New Sand Timer Short 15 Minutes
SD008
M. 16.5 x 16.5 x 50cm, 6.5 x 6.5 x 7.8"

Collectable because of their combined historical and practical value. Ship's hourglasses were calibrated to the half hours of the ship's watch. To appreciate the important symbolism of the hourglass observe, Renaissance painted still lives, also called Vanitas, filled with symbolism and morals. They very often depict hourglasses.



Bronzed 3 Minute Sandglass
HG001B
Ø 3.5 x 9.5cm, 1.5 x 3.75"



Desk Clock Wood Base
SC044
M. 24 x 10 x 10cm, 9.5 x 4 x 4"
US Only
Clock not included



Captain's Time & Tide Clock
SC042
Ø 18 x 6.5cm, 7 x 2.5"
US Only

During the Great War, from 1914-18, a new kind of art flourished. Hand crafted creations from gifted soldiers and army personnel became known as trench art. They used whatever material was at hand. Popular fabrications included lighters and clocks made in all shapes and sizes. Our aluminum propeller clock was probably designed by an airplane engineer at a time when aluminum was only used for engines and small parts.



Navy Clock
SC048
Ø 16 x 10.25cm, 6.25 x 4"



Art Deco Flight Clock
AP104
M. 35.5 x 7 x 10.5cm, 14 x 2.75 x 4.25"

From an era when one could travel the world in style!



Propeller Clock
AP111
M. 30.5 x 9.5 x 5.5cm, 12 x 4 x 2"

An exact reproduction of a 1930s Art Deco flight clock. Hand cast airplane aluminum, polished. Nostalgic and chic.



Porthole Clock, Aluminum
SC043
M. 15 x 5cm, 6 x 2"



Carriage Clock
SC045
M. 52.5 x 24.5 x 17.5cm, 20.75 x 9.75 x 7"

Designed to take the rigors of the roughest roads, this durable little clock will withstand the test of time.



Savoy Pocket Watch
SC057
M. 22.5 x 22.5cm, 9 x 9"



Victorian Pocket Watch
SC058
M. 22.5 x 22.5cm, 9 x 9"



Porthole Eye Of Time, Bronze
SC055
M. 22.5 x 22.5cm, 9 x 9"

In an age when longitude was still defined by sextant and chronometer, the vessel's wheelhouse carried a deck watch to keep time. In the tradition of these small practical watches we designed this sturdy watch with an industrial nautical look.



Victorian Dome Watch
SC054
M. 22.5 x 22.5cm, 9 x 9"

Precious moments displayed under a hand blown glass dome. French finished cherry wood base. Brass replica pocket watch.



The Eye of Time Clock, Library
SC052
Ø 7.5 x 11.5cm, 3 x 4.5"
Gift packaged



Stand for Eye of Time, Library
GL000L
width 13cm, 5.25", height 27.5cm, 11", depth 7.5cm, 3"
SC052 clock sold separately



The Eye of Time Clock
SC050
Ø 5 x 8cm, 2 x 3.25"
Gift packaged



Desk Essentials Stand for Globe
GL000
width 11cm, 4.25", height 17.5cm, 7", depth 7.5cm, 3"
SC050 clock sold separately



The Eye of Time Clock, Nickel
SC051
Ø 5 x 8cm, 2 x 3.25"
Gift packaged



Stand for Eye of Time, Nickel
GL000C
width 11cm, 4.25", height 17.5cm, 7", depth 7.5cm, 3"
SC051 clock sold separately



50-Year Calendar
BC002
M. 7.5 x 2cm, 2 x 1" EU Only
Gift packaged

An early, simple pocket calculator from an era when 50 years were akin to perpetual. Its origin goes back some 500 years. Calculate the day of the week for any given future date, within a 50-year span. To use, simply rotate dial until the selected year lines up with the selected month. Locate the particular date and find the day of the week above it.



50-Year Calendar
BC006
M. 7.5 x 2cm, 2 x 1"
Gift packaged

The hero of our story is an anonymous watchmaker in Regency London. Trying to combine a travel clock that needs to be small while easy to read. Little would he know that his spherical desk watch would be a highly collectable treasure.



Vintage Travel Magnifier
AC091
M. 17 x 6.5 x 2.5cm, 6.75 x 2.5 x 1"



Mini Magnifier
AC092
M. 7.5 x 4.5cm, 3 x 1.75"



Magnifying Glass, Brass
AC099
M. 25 x 10 x 2.5cm, 9.75 x 4 x 1"
Gift packaged



Magnifier Stand
AC000
M. 50 x 19.5 x 39.5cm, 19.75 x 7.75 x 15.5"



Empress Reading Glass
AC095
M. 23.5 x 8 x 20.5cm, 9.25 x 3.25 x 8"

During the late Victorian era and into the Belle Époque one's monocle served to intimidate and disadvantage. A gift with excellent provenance, an accessory that delivers.



Vintage Travel Magnifier
AC090
M. 13 x 5.5 x 1.5cm, 5.25 x 2.25 x .75"
Gift packaged



Nickel Magnifying Glass, Nickel
AC098
M. 32 x 8.5 x 2cm, 12.5 x 3.25 x 0.75"
Gift packaged



Magnifying Glass with Stand
AC099A
M. 25 x 11.5 x 18cm, 9.75 x 4.5 x 7"



Magnifying Glass w/Stand, Bronzed
AC099E
M. 25 x 11.5 x 18cm, 9.75 x 4.5 x 7"



Magnifying Glass, Bronzed
AC099B
M. 25 x 10 x 2.5cm, 9.75 x 4 x 1"
Gift packaged



Reader's Glass
AC116
M. 22.5 x 8cm, 9 x 3.25"



Rococo Magnifier, Bronze
AC113
M. 13 x 5.25cm, 5.25 x 2"

Classic accessory for any coffee table or end table. Duotone bronzed brass.



Rococo Magnifier, Silver
AC114
M. 13 x 5.25cm, 5.25 x 2"



Discovery Glass
CO004
Ø 5.5 x 1.25cm, 2.25 x 0.5"



Regency Magnifier
AC109
M. 26.5 x 11.5cm, 10.5 x 4.5"
Gift packaged



Officer's Spyglass
KA036
M. 38.75 x 4.25cm, 15.25 x 1.75"



Victorian Binoculars
KA026
M. 16 x 12 x 5.5cm, 6.25 x 4.75 x 2.25"



Bronze Spyglass
KA023
M. 46 x 5.5cm, 18 x 2.25"



Bronze Spyglass & Stand
KA023F
M. 54 x 17 x 11cm, 21.25 x 6.75 x 4.5"



Victorian Binoculars w/ Tripod
KA025
M. 16.5 x 14 x 41.5cm, 6.5 x 5.5 x 16.5"
Binoculars were a Victorian invention and were much easier to use than the one lens drawn out telescope. Sturdy 19th C. binoculars on elegant beautifully crafted mini-tripod.



Monocular on Tripod
KA039
Ø 96 x 170cm, 37.75 x 67"
Magnification 20X

This astonishing monocular is outfitted with complicated prismatic lenses. Its brass and nickel parts are expertly covered with hand-sewn leather, to withstand the wear and tear of daily use on campaign.



Avalon Telescope
KA038
M. 100 x 82 x 156.25cm, 39.5 x 32.25 x 61.5cm
Magnification 35X



Compasses offer the most significant message to the recipient in the smallest, most interesting package possible. It's a symbol for direction, staying the course, for adventure, discovery, science and human inventiveness. In short, it has it all...



Pocket Compass
CO003

M. 8.5 x 10 x 1.5cm, 3.25 x 4 x 0.5"



Small Compass
CO002

M. 4.7 x 6.5 x 1.5cm, 1.75 x 2.5 x 0.5"



Compass Display English
CO000

M. 23.5 x 29.75 x 23cm, 9.25 x 11.75 x 9"



Victorian Trails Compass
CO007

Ø 6 x 1.75cm, 2.5 x 0.75"



WWII Compass
CO014

Ø 5.5 x 2cm, 2.25 x 0.75"



Small Compass, Bronze
CO002B

M. 4.7 x 6.5 x 1.5cm, 1.75 x 2.5 x 0.5"



Collector's Compass
CO017

M. 10.5 x 14 x 19.5cm, 4.25 x 5.5 x 7.75"

Its origin was from ancient China and considered as an instrument of magic. Taken to the West it introduced open-sea navigation. Sailing vessels no longer needed to hug the coast. This compass was originally created for the scientific instrument collection of King George IV. Its elegant design features gimbal-rings, which serve to keep the compass bowl horizontal. Hand-tooled in admiralty brass.



Executive Compass
CO013

M. 9 x 9 x 4.3cm, 3.5 x 3.5 x 1.75"
EU Only



Lewis & Clark Compass
CO009

M. 7.75 x 7.75 x 2.25cm, 3 x 3 x 1"



Lifeboat Compass
CO015

M. 12 x 12 x 8.5cm, 4.75 x 4.75 x 3.5"



Polaris Compass
CO027

Ø 5.8 x 1.2 cm, 2.25 x .675"



Navigator's Box
CO018

Ø 9 x 4cm, 3.5 x 1.5"
EU Only



Sextant in Case
KA032

M. 15 x 15 x 8cm, 6 x 6 x 3.25"

Charming pocket sextant as used by Victorian explorers and surveyors. Intricate and semi-functional, it has all the pieces needed to shoot the sun. A sextant defined latitude. A clock longitude.



Bronze Pocket Sextant
KA030

M. 11 x 11 x 6cm, 4.25 x 4.25 x 2.25"



18th C. Compass-Sundial,
Small
CO028
Ø 5.5 x 1.5cm, 2.25 x .5"



Sunny Hours
CO026
M. 5.1 x 5.1 x 12.5cm, 2 x 2 x 5"



18th C. Sundial & Compass
CO012A
Ø 8.5 x 2.5cm, 3.5 x 1"



New
FitzRoy Storm Glass
SD001
M. 12.5 x 7 x 19cm, 4.93 x 2.76 x 7.49"
A popular item in the 1860s, popularised (though not invented) by Admiral Robert Fitz-Roy. The degree to which the liquid inside the orb crystallises is supposed to be predictive of weather conditions. See for yourself how well our scientifically accurate reproduction works!



New
Crookes Radiometer Round Shape Big
SD005
M. 13 x 13 x 30cm, 5.12 x 5.12 x 11.82"
Recreation of an 1873 invention by the chemist Sir William Crookes, the veins inside this airtight glass move when exposed to sunlight.

This travel sundial needs a compass to find north. Raising the triangular gnomon upright while pointing the compass needle North will show the time. Bronze dry compass, hand colored reproduction compass cards.



Don't forget to check the weather before heading out to sea. More accurate than many a weatherman! 19th C. style instrument, decorative as well as interesting.

Captain's Barometer
SC041
M. 24 x 10 x 10cm, 9.5 x 4 x 4"
US Only
Stand not included
Desk Clock Wood Base
SC044
M. 24 x 10 x 10cm, 9.5 x 4 x 4"
US Only
Barometer not included



Weather Glass, Wall Plaque
WG011F
M. 15.5 x 8 x 42cm, 6 x 3.25 x 16.5"
US Only



Tabletop Weather Glass
WG015F
Ø 15 x 33cm, 5.75 x 13"
US Only
King George III collected scientific instruments. Not for function, but for form and beauty. The brass arch, lightly distressed French finish base, and brass details turn this weatherglass into a work of art.



LIFESTYLE

COLLECTION

Past eras were lived at a slower pace which allowed more time for artistry, invention and appreciation. From home décor and hospitality items all the way through to ‘toys for grown-up-boys’, objects and styles reflected true labours of love. Quality and beauty were always a matter of pride, both to the craftsmen and engineers who created them and to those who could afford to own them.

Authentic Models brings this passion for excellence back to life with a collection of decorative – and sometimes also functional – household objects which infuse character from past eras into modern day living. While some are faithful replicas or copies, others are our own design, inspired by antique style. What they all have in common is a presence which makes homes welcoming to reside in and intriguingly inviting for guests.



Bantam Midget
PC011

M. 48 x 22 x 18cm, 19 x 8.75 x 7"



Bantam Midget, Red
PC012

M. 48 x 22 x 18cm, 19 x 8.75 x 7"

Spindizzies, named for the dizzying speeds they reached, were inspired by full size racecars. Handcrafted, large-scale miniatures were made by skilled owners, who often spent hundreds of hours on each car. Cherished by their owners, they now are coveted by collectors the world over. Our Bantams are truly hand tooled, traditionally die stamped body parts, in aluminum, brass and polished mahogany wood. Lift the hood; admire the replica engine. Turn the cockpit wheel and angle the front wheels. Smell the luxurious leather of the driver's seat. This is a touch of car history at its best.



BB Korn
PC013

M. 52.5 x 24.5 x 17.5cm, 20.75 x 9.75 x 7"



BB Korn, Red
PC013R

M. 52.5 x 24.5 x 17.5cm, 20.75 x 9.75 x 7"

Technically skilled enthusiasts of the 1930s loved to race the legendary B.B. Korn cars around the club tracks. Called tether cars or spindizzies, they reached incredible speeds, and inspired thousands to improve and invent. The founder of the B.B. Korn Manufacturing Company, Barney Korn, produced several tether car models that now, as vintage antiques, achieve astounding sums at auction.



Indianapolis, Alu/Brown
PC010

M. 31 x 13 x 9cm, 12.25 x 5.75 x 3.5"
Gift packaged



Indianapolis, Alu/Red
PC010R

M. 31 x 13 x 9cm, 12.25 x 5.75 x 3.5"
Gift packaged



Silberpfeil
PC014

M. 31 x 13 x 9cm, 12.25 x 5.75 x 3.5"
Gift packaged

In 1934, the international motor sport governing body specified a maximum weight for Grand Prix racing cars of 750 kg, excluding tyres and fuel. The Germans decided to reduce weight by removing the lead-based paint which denoted its cars' traditional white livery, exposing distinctive shining aluminium. Victory by one of these lead to the nickname Silver Arrow. Their successors, which were built on the same chassis, continued to race successfully at the Indy 500 after the war.



Silberpfeil, Red Seat
PC014R

M. 31 x 13 x 9cm, 12.25 x 5.75 x 3.5"
Gift packaged



Hornet
PC015

M. 24.5 x 13.5 x 9.5 cm,
9.75 x 5.25 x 3.75"
Gift packaged

In the 1930s Spindizzies or Tether Cars were miniature racecars built by hobbyists which drove around banked wooden tracks at speeds approaching 150 miles per hour. Incredibly detailed and aerodynamic, these racers were beyond toys.



New Classic Car Bookends
KD001

M. 14 x 8.5 x 18cm, 5.5 x 3.3 x 7.1"



Obelisk Large, Honey
AR018
M. 9 x 9 x 50cm, 3.5 x 3.5 x 19.75"



Obelisk Medium, Black
AR017
M. 7 x 7 x 40cm, 2.75 x 2.75 x 15.75"



Bell Tower Antica
AR011
Ø 34.75 x 87.5cm, 13.5 x 34.25"



Demi-Dome
AR015
M. 46 x 25 x 41cm, 18 x 9.75 x 16"



Duomo Due
AR014
M. 25.5 x 25.5 x 62cm, 10 x 10 x 24.25"

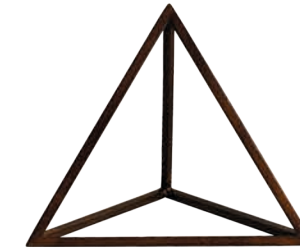


Nirvana Spire
AR041
Ø 26.5 x 55cm, 10.5 x 21.75"

Spiral belltowers are the most difficult to construct. Skilled wood worker journeymen were asked to finish challenging models as a final exam before receiving their master papers. Ours is a true copy of an original version and purely handmade as well.

AM offers a small but no less fascinating collection of early stair models and architectural Models. Architects over the centuries have made models to check details and help clients understand dimensional perspectives. Many architects of renown collected models, not only for their exquisite workmanship but also for their value as décor in homes and especially offices. AM offers a small but no less fascinating collection of early stair models and dome buildings. Cherry and birch wood finished and now aslso in timeless black.

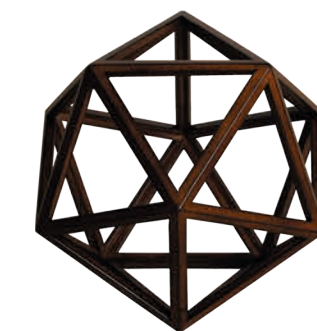
Leonardo da Vinci devised a method to portray the famous 'Platonic shapes' in perspective of which wooden models have been made during The Renaissance, representing symbols for earth and fire, water and air. They became actual symbols of learning and sophistication. Besides their metaphysical and geometric importance, the Da Vinci shapes are quintessential building blocks of matter.



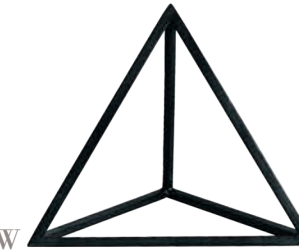
Tetrahedron
AR035
M. 22.5 x 22.5cm, 9 x 9"



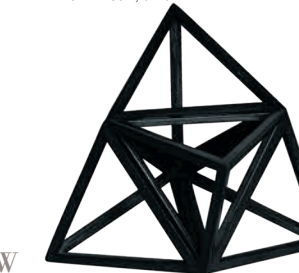
Elevated Tetrahedron
AR037
M. 21.5 x 21.5cm, 8.5 x 8.5"



Icosahedron
AR039
M. 23.5 x 23.5cm, 9.25 x 9.25"



NEW
SPRING 2018
Tetrahedron, Black
AR035B
M. 22.5 x 22.5cm, 9 x 9"



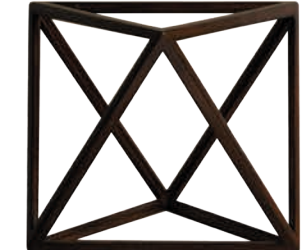
NEW
SPRING 2018
Elevated Tetrahedron, Black
AR037B
M. 21.5 x 21.5cm, 8.5 x 8.5"



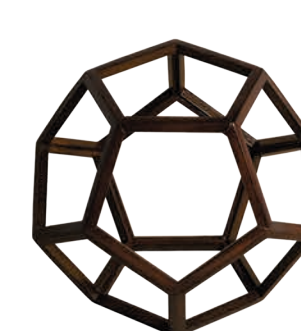
NEW
SPRING 2018
Icosahedron, Black
AR039B
M. 23.5 x 23.5cm, 9.25 x 9.25"



New Davinci #3
AR040
M. 21.5 x 21.5cm, 8.5 x 8.5"
US Only



Octahedron
AR036
M. 23 x 23cm, 9 x 9"



Dodecahedron
AR038
M. 23 x 23cm, 9 x 9"



Our sculptured masks of Venetian Carnival characters represent an age when elegance and sophistication mixed with a need for secrecy and pretense.

The Duke of Malfi

MC066

M. 14.5 x 6.5 x 20.5cm, 5.75 x 2.5 x 8.25"

Gift packaged



The Duchess of Malfi

MC067

M. 8.5 x 6 x 21.5cm, 3.5 x 2.25 x 8.5"

Gift packaged



Bouffon Venice

MC068

M. 15 x 10 x 23cm, 6 x 4 x 9"

Gift packaged



A miniature replica of a Gladiator helmet. For some reason we couldn't resist making one...

New
Roman Helmet

AF001

M. 16 x 12 x 25cm, 6.3 x 4.7 x 9.9"



Buffalo Skull

AR060

M. 40 x 20 x 42cm, 15.75 x 8 x 16.5"

M. Skull (without stand) 40 x 13 x 36cm, 15.75 x 5.25 x 14.25"



Saber Tooth Skull

AR061

M. 19.5 x 33 x 33cm, 7.75 x 13 x 13"



Antelope Skull

AR062

M. 24 x 23.5 x 54cm, 9.5 x 9.25 x 21.25"

M. Skull (without stand) 24 x 13 x 42cm, 9.5 x 5.25 x 16"



Lighthouse Steps

AR013

Ø 36 x 55cm, 14.25 x 21.75"



Lighthouse Steps, Large

AR042

Ø 34.5 x 61cm, 13.5 x 24"

A tall version of our classic Lighthouse Step.



Wall Mount Stair Model

AR001

M. 46 x 18 x 25cm, 18 x 7 x 10"



Grand Staircase

AR012

Ø 32 x 49cm, 12.5 x 19.25"



Spiral Stairs

AR019

Ø 11 x 17.5cm, 4.25 x 7"





Bisque Domino
AR024
M. 15.25 x 15.25 x 32.5cm, 6 x 6 x 12.75"
EU Only



Bisque Pisa
AR025
Ø 15 x 48cm, 6 x 19"
EU Only



Ivan Tower, Bisque
AR026
M. 13.5 x 13.5 x 37cm, 5.25 x 5.25 x 14.5"
EU Only



Anastacia Tower, Bisque
AR027
M. 10.5 x 10.5 x 32cm, 4.25 x 4.25 x 12.5"
EU Only



Fyodor Tower, Bisque
AR028
M. 10 x 10 x 26cm, 4 x 4 x 10.25"
EU Only



Dante Bust
AR050
M. 25 x 25 x 47cm,
10 x 10 x 18.5"

Dante Alighieri is known as a famous author, whose books are icons of wisdom and culture. As such his bust has been a standard accessory for libraries and bookstores over the ages.

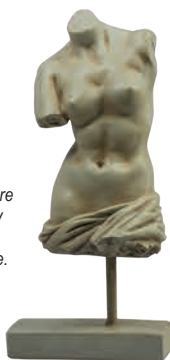


David Head
AR051
M. 10 x 11.5 x 22cm, 4 x 4.5 x 8.75"



Roman Male Torso
AR052
M. 14 x 10.5 x 32cm, 5.5 x 4.25 x 12.75"

This set of figures represents the best of the ancient Greek and Roman sculpture. Handmade from a mixture of resin and plaster, they are expertly aged and finished to a high degree.



Roman Female Torso
AR053
M. 13.5 x 10 x 29cm, 5.25 x 4 x 11.5"



Captain's Walking Stick
WS002
Ø 3.5 x 92cm,
1.5 x 36.25"
The gentlemen's walking stick has a brass knob that hides a compass, the cane a glass for a tipple.



Telescope Walking Stick
WS005
Ø 5 x 98cm,
2 x 38.5"
A cleverly engineered mechanism allows the telescope to be pulled up and swiveled. Held up by the stick it can be aimed and pointed like a monocle which magnifies threefold.



Time Companion
WS006
Ø 5 x 98cm,
2 x 38.5"
Our recreation of this Victorian walking stick has a wind-up watch set in the knob. Both a decorative prop as a practical timekeeper.



Dandy Stand
WS000
M. 30.5cm x 7cm x 68cm, 12 x 2.75 x 26.75"



Rocking Horse
RH006
M. 142.5 x 46.5 x 120.5cm,
56 x 47.5 x 18.25"

Our iconic rocking horse is a full-sized reproduction of originals dating back to the 19th C. Hand carved in top quality mahogany. Hand made saddle and tack of real bridle leather. The expert skills of wood carvers, cabinetmakers, and saddlers are evident.



Rocking Horse,
Western Saddle
RH006W
M. 142.5 x 46.5 x 120.5cm,
56 x 47.5 x 18.25"
US Only

The walls of the workshops of Renaissance artists were filled with plaster casts of classic sculpture. Models of the human form and of horses were in demand for everyday use. Sculpted in wood, elaborately jointed and movable.



Artist Horse
MG003F

M. 22.5 x 6 x 23cm, 8.75 x 2.25 x 9"



Artist Hand
MG001F

Ø 10 x 25cm, 4 x 9.75"



Super Bolt
AC053

M. 14 x 16.5 x 29cm, 5.5 x 6.5 x 11.5"

Celebrating the powerful beauty of this essential element of ship-building, this solid aluminium enlargement is ideal as a decorative ornament, doorstop or bookend.



Artist Horse, Large
MG006F

M. 37 x 8.5 x 34cm, 14.5 x 3.5 x 13.5"



Artist Model
MG008F

Ø 15 x 39cm, 6 x 15.25"



Phrenology Head
MG020

M. 14 x 16.5 x 29cm, 5.5 x 6.5 x 11.5"

A tool of trade for the Victorian doctor's desk in crackled porcelain. A challenging gift and valuable home décor.



New
Sword Fish Wall Deco
WD018

M. 105 x 22 x 44cm, 41.4 x 8.7 x 17.3"



New
Rhino Footstool
KD002

M. 70 x 28 x 37cm, 27.6 x 11 x 14.6"

Bring a sense of African adventure into your home with these genuine leather safari animal representations. Amusing to look at and fun to use as door stops or in other ways around the house. Larger pieces are even robust enough for the little ones to sit on.



Half plane model

New
Airplane Wall Deco
WD017

M. 101 x 53 x 32cm, 39.8 x 20.9 x 12.6"



New
Elephant Doorstop
KD003

M. 22 x 10 x 18cm, 8.7 x 3.9 x 7.1"



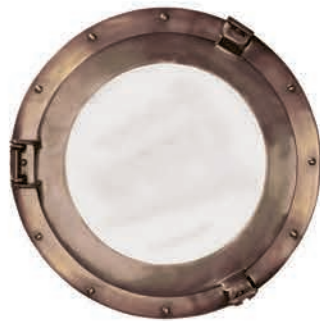
New
Boat Propeller Wall Deco
WD013

M. 48 x 53 x 8.5cm, 18.9 x 20.9 x 3"



New
Rhino Wall Deco
KD004

M. 46 x 19 x 31cm, 18.1 x 7.5 x 12.2"



Cabin Porthole Mirror, Medium
AC188A
M. Ø38 x 7cm, 15 x 2.75"



Bronze Porthole Mirror, Large
AC189A
Ø 51 x 7cm, 20 x 2.75"



Belle Epoque Vanity Mirror
AC094
M. 37 x 8.5 x 34cm, 14.5 x 3.5 x 13.5"
EU Only



Victorian Vanity Mirror
AC110
M. 14 x 16.5 x 29cm, 5.5 x 6.5 x 11.5"
EU Only



New

Classic Eye Table Mirror, XL
HA003
M. 19.5 x 12 x 42.5cm, 7.68 x 4.73 x 16.75"



New

Classic Eye Table Mirror, L
HA001
M. 32.5 x 11 x 17cm, 12.81 x 4.33 x 6.7"



New

Classic Eye Table Mirror, M
HA004
M. 16 x 11 x 26cm, 6.3 x 4.33 x 10.24"



New

Classic Eye Table Mirror, S
HA002
M. 12 x 10.5 x 19cm, 4.73 x 4.14 x 7.49"

These distorting mirrors are used for entertainment as the convex and concave regions produce deliberately distorted images



New

Classic Eye Mirror, Oval
WD002
M. 25 x 48cm, 9.85 x 18.91"



New

Classic Eye Mirror, Deep
WD003
M. Ø 63.5cm, Ø 25.02"



New

Classic Eye Mirror, Round
WD004
M. Ø 68cm, Ø 26.79"



New
Antique Train Rack
WD014
M. 25 x 48 x 58cm, 9.9 x 18.9 x 22.9"

New
Antique Mirror S
WD016
M. 50 x 37.5 x 12cm, 19.7 x 14.8 x 4.7"



New
Antique Mirror XL
WD015
M. 39 x 108 x 1.5cm, 15.4 x 42.6 x 0.6"



New
Classic Eye Wall Mirror, L
WD006
M. 25.5 x 25.5 x 6.5cm, 10.05 x 10.05 x 2.56"



New
Classic Eye Wall Mirror, XXL
WD007
M. 30.5 x 30.5 x 7cm, 12.02 x 12.02 x 2.76"



New
Classic Eye Wall Mirror, XS
WD009
M. 15 x 15 x 3cm, 5.91 x 5.91 x 1.18"



New
Classic Eye Wall Mirror, M
WD008
M. 23 x 23 x 5cm, 9.06 x 9.06 x 1.97"



New
Classic Eye Wall Mirror, S
WD012
M. 20 x 20 x 4.5cm, 7.88 x 7.88 x 1.77"



New
Classic Eye Wall Mirror, XL
WD005
M. 28 x 28 x 7cm, 11.03 x 11.03 x 2.76"



New
Classic Eye Wall Mirror, XXXS
WD011
M. 10 x 10 x 3cm, 3.94 x 3.94 x 1.18"



New
Classic Eye Wall Mirror, XXS
WD010
M. 18 x 17 x 4cm, 7.09 x 6.7 x 1.58"

Grand Hotel Key Rack
KC000

M. 41 x 3 x 23cm, 16.25 x 1.25 x 9"



Excelsior Hotel
Key
KC101

M. 10.5 x 4.5 x 1cm,
4.25 x 1.75 x .5"

Grand Hotel
Den Dolder
KC102

M. 13 x 5 x 1cm,
5 x 2 x .5"

Grand Hotel
Stockholm Key
KC100

M. 12 x 4 x 1cm,
4.75 x 1.5 x .5"

Grand Hotel
du Parc Key
KC103

M. 11 x 4.5 x 1cm,
4.25 x 1.75 x .25

Inspired by Grand Hotels in the 19th Century, our keys are hand cast bronze with intricate detail. Each key is gift packaged.

An incredible wall map of the Renaissance world during the reign of Queen Elizabeth I. Comes in a handmade cardboard portfolio box, ready for library or coffee table.



World Map Portfolio
MC818

M. 160 x 74.5cm, 63 x 29 3/8"



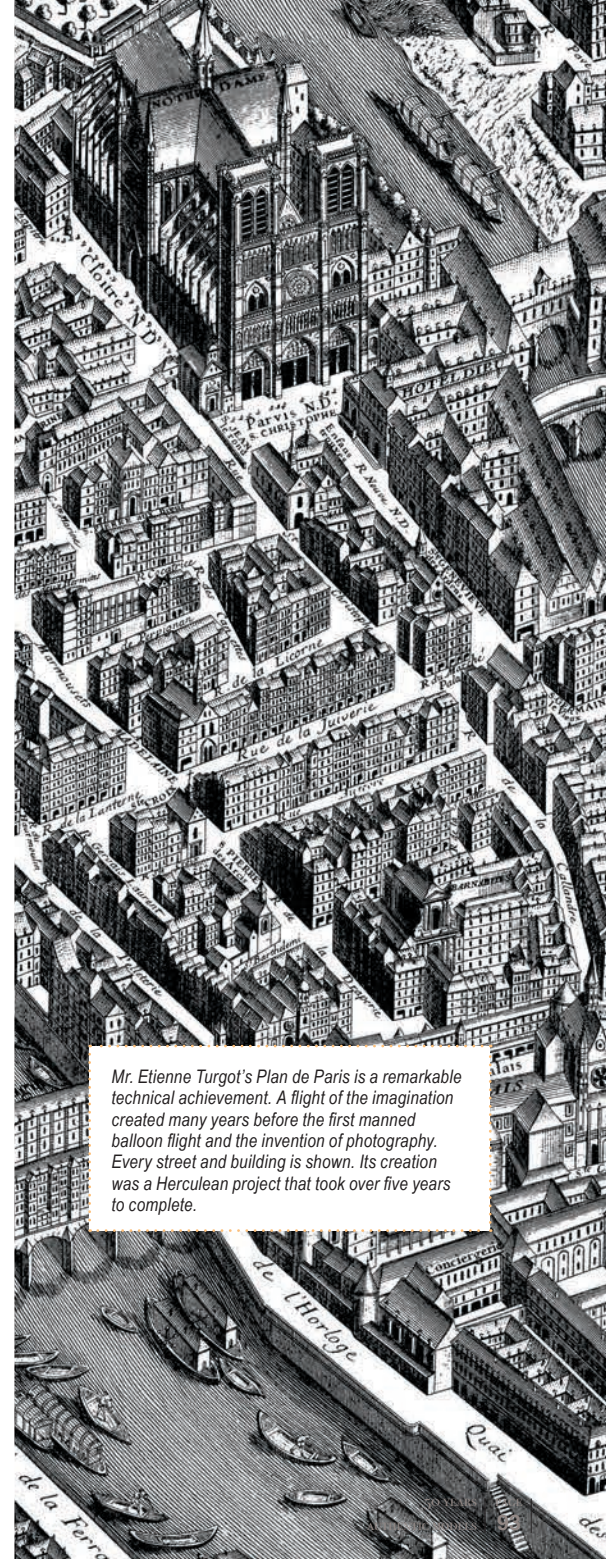
1694 Venice Portfolio
MC816

M. 160 x 62.5cm, 63 x 25 5/8"



1739 Paris Portfolio
MC800

M. 249.5 x 195cm, 98 x 76.5"



Mr. Etienne Turgot's Plan de Paris is a remarkable technical achievement. A flight of the imagination created many years before the first manned balloon flight and the invention of photography. Every street and building is shown. Its creation was a Herculean project that took over five years to complete.

Ship bells are made of heavy solid brass, handmade and sand-cast. The chunky hand knotted lanyard offers years of use. We offer four sizes of bells for beach house or boat. A true nautical heirloom.



Ship's Bell, 13cm
AC072B
Ø 12.75 x 12cm, 5 x 4.75"



Ship's Bell, 20cm
AC075B
Ø 20.25 x 22cm, 8 x 8.5"
US Only



Ship's Bell, 15cm
AC073B
Ø 15 x 16.5cm, 6 x 6.5"



Sailor's Inn Desk Bell
AC100
Ø 13 x 10.5cm, 5.25 x 4.25"



Purser's Bell
AC076
M. 15 x 24 x 20cm, 6 x 9.5 x 7.75"



Sailor's Inn Desk Bell, Bronze
AC103
Ø 13 x 10.5cm, 5.25 x 4.25"



Dumb Bell
Cocktail Shaker
CS004
Ø 12 x 26cm, 4.75 x 10.25", 32 fl. oz.



Fire Extinguisher
Cocktail Shaker
CS002
Ø 9 x 25cm, 3.5 x 9.75", 40 fl. oz.



Thirst Extinguisher
Cocktail Shaker
CS001
Ø 10.5 x 38cm, 4 x 15", 40 fl. oz.



Joy Bell
Cocktail Shaker
CS003
Ø 15 x 28cm, 6 x 11", 35 fl. oz.



Lighthouse
Cocktail Shaker
CS010
Ø 13 x 35.5cm, 5 x 14", 72 fl. oz.

In 1919, the passing of the 18th Amendment to the US constitution cleared the way for 13 years of Prohibition. While supporters referred to it as the "noble experiment", those against it actually drank more than ever. To cover up the rough taste of the poor quality alcohol which remained available, bartenders created cocktails with plenty of juices and other sweeteners. A few shakers from the era survived, and Authentic Models has reproduced these in all their beautiful detail. Decorative and fully functional!





Sommelier Put-Away
MF127
Ø 15 x 39cm, 6 x 15.25



Backgammon Tray
FF106
M. 53 x 13 x 36cm, 21 x 5.25 x 14.25"
Black serving tray in Backgammon design. Game pieces not included.



Travel Tea Cabinet
MF147
M. 52 x 18 x 44cm, 20.5 x 7 x 17.25"
This tea cabinet with Kanji tea graphic adds a special sense of ceremony and convenience to your tea time. It's spacious enough to contain a sizeable collection of teas and to display teapot and cups.



New
Airplane Bottle Stopper
BA004
M. 9 x 9.5 x 8.5cm, 3.5 x 3.7 x 3.3"



Rum Measure Cup
AC101
M. 8.25 x 5.25 x 5.5cm, 3.25 x 2 x 2.25"
For over 300 years, the many navies of the world served daily rum rations which tradition continued until the 1950s. Handmade in copper and brass, silver-plated inside, decorated with the stylized Crown and Anchor of the British Navy.



New
Coasters Set of 4, Sisal
HD003
M. 9 x 9 x 0.5cm, 3.5 x 3.5 x 0.2"



New
King's Bottle Stopper
BA003
M. 3 x 3 x 10cm, 1.2 x 1.2 x 3.9"



Coat Hook Bronze
TH003
M. 12.5 x 27.5 x 38.5cm, 4.9 x 10.8 x 15.2"



New
Coaster XL, Sisal
HD005
M. 18.5 x 18.5 x 1cm, 7.3 x 7.3 x 0.4"



British Butler Table
CF003F
M. 69 x 56.5 x 47cm, 27.75 x 22.25 x 17.75"



Small Tray
FF108
M. 36.5cm x 28 x 5cm, 14.5 x 11 x 2"



Six-in-One
FF101
M. 22.75 x 34 x 22cm, 9 x 13.5 x 8.75"



Single Serve Tray
FF107
M 45.5 x 25.5 x 6.5cm, 18 x 10 x 2.5"



Included with Unit #2



Butler's Tray
FF102
M. 63.5 x 40.5 x 5cm, 25 x 16 x 2"
The campaign serving tray in lustrous French finish and brass-bound corners.

3 stacked units with tray
M. 50 x 30 x 128cm, 19.75 x 11.75 x 50.5"



Glass Unit #1
MF212
M. 50 x 30 x 41.75cm, 19.75 x 12 x 16.5"



Bottle Rack/Bookcase Unit #2
MF211
M. 50 x 30 x 41.75cm, 19.75 x 12 x 16.5"



Bottle Rack Unit #3
MF210
M. 50 x 30 x 41.75cm, 19.75 x 12 x 16.5"





Being outlawed occasionally a portable roulette was invented, which was popular with officers of the Imperial Army and taken on campaign. Simplified with less numbers it still allows for fun gambling.



Roulette
GR025

M. 22.5 x 6 x 23cm, 8.75 x 2.25 x 9"
US Only

A subtle finger twist sets the top on its seemingly magic tour across the curved surface of the bowl. Six tops in six colors allow players to compete for the longest spin.



Spinning Tops & Board
GR026

Ø 15 x 39cm, 6 x 15.25

Possibly the most unusual domino game in the world. The original was carved in ivory by a Dutch Renaissance artist. Unique gift, historical décor.



Dutch Renaissance Domino Game
GR001F

M. 21 x 29 x 1.75cm, 8.25 x 11.5 x .75"
Gift packaged

Hand blown oversized marbles in white and black complete the palette.



Venetian Tic-Tac-Toe
GR004

M. 22 x 33 x 3.5cm, 8.75 x 13 x 1.5"
Gift packaged

The archetypal tool of chance, dice are the oldest gaming implements known to man. They were the inspiration which eventually led to both dominoes and playing cards. Authentic Models celebrates the longevity of these simplest of implements with a beautifully decorative wooden set, which is also fully functional!



New
Throw The Dice
GR030

M. 6.5 x 6.5 x 6.5cm, 2.6 x 2.6 x 2.6"



Classic Chess Board
GR028

M. 42 x 42 x 4.5cm, 16.75 x 16.75 x 2"
GR021 Chess pieces not included

Master Staunton Chess Set
GR027

King measures Ø 4.5 x 12cm, 1.75 x 4.75",
board not included



Classic Staunton Chess Set
GR021

King measures Ø 3.5 x 8cm, 1.4 x 3.25", board not included
Gift packaged

English chess master, Howard Staunton, promoted this set at the first international chess tournament in 1851. It became the competition standard known as the 'Staunton' set. Our red and ivory Grandmaster's set is for players, fan for interiors of refined style that require a classic game board or table on display at all times.



Solitaire Game, 20 mm
GR005F

Ø 25 x 3.5cm, 9.75 x 1.5"
Gift packaged

Exactly 38 hand made marbles made of at least 15 different semi-precious minerals.



Semi-precious Solitaire, 35mm
GR022

Ø 35 x 9cm, 13.75 x 3.5"



Solitaire Di Venezia, 25mm
GR007

Ø 30 x 3cm, 11.75 x 1.25"
Gift packaged

The game of Solitaire was invented in the Bastille prison during the early years of the French Revolution and is played with 36 marbles. The object is to eliminate all but one marble, which should ideally end up in the center of the game board.



NAUTICAL

COLLECTION

From secluded bays and tranquil seas to iconic rivers and daunting oceans, life on the water has meant many different things to different people through the ages. Explorers, immigrants, leisure travellers and those of a sporting disposition have each established their own bonds. Some through purpose, some for competitive challenge and others purely for pleasure.

Authentic Models' accurate models of sailing ships, steamers and runabouts evoke emotions connected with golden eras of water transport. Every piece is superbly crafted with meticulous attention to detail, paying homage to the sublime beauty of waterborne vessels in a way that everybody can appreciate. Alongside these, our decorative oars are a must for rowing enthusiasts.



A sailor's dream, attractive and well proportioned. This classic 1930s yacht model is a beauty. Clean and crisp sails, bronze portholes and lots of nice details. Available in two sizes.

1930s Classic Yacht, Large
AS135
M. 54.5 x 12.75 x 59.75cm, 21.5 x 5 x 23.5"



1930s Classic Yacht, Small
AS134
M. 54.5 x 12.75 x 59.75cm, 21.5 x 5 x 23.5"



America's Cup Columbia, Large
AS075F
M. 173 x 23 x 166.5cm, 68 x 9 x 65.5"



America's Cup Columbia, Medium
AS076F
M. 114.5 x 18 x 118.5cm, 45 x 7 x 46.75"



America's Cup Columbia, Small
AS108F
M. 94 x 13 x 90cm, 37 x 5 x 35.5"



J-Yacht 'Ranger' 1937
AS150
M. 69 x 14 x 89cm, 27.25 x 5.5 x 35"

Ranger, the 1937 A-Cup contender, in original colors of red and white. Clean white sails, detailed stitching. Great home décor.



J-Yacht 'Rainbow' 1934
AS152
M. 69 x 14 x 89cm, 27.25 x 5.5 x 35"

The 1934 American defender is a classic racer. Legendary nautical history by now. Detailed rigging and sails.



Dragon Olympic Sail Racer
AS078F
M. 76.5 x 18 x 99cm, 30 x 7 x 39"

This is a real scale model, a miniature of a legendary 1930s regatta racer. Cotton sails and lines with a French finished hull. Easy to assemble.



Newport Sloop
AS168
M. 46 x 17.5 x 21.25cm, 18.25 x 7 x 8.5"



Yacht 'Ironsides', Small
AS167
M. 46 x 17.5 x 21.25cm, 18.25 x 7 x 8.5"

This ship has been an antique toy with tremendous appeal. It's built plank-on-frame, all wood, brass antique hardware and tea stained sails.



Union Jack Pond Yacht
AS051
M. 78 x 14 x 87.5cm, 30.75 x 5.5 x 34.5"

Sewn and hand finished sails represent cuttings of old nautical country flags and pennants.



Aquarama
AS182
M. 64 x 20 x 19cm, 25.25 x 7.75 x 7.5"

The Aquarama has become a nautical legend. Its evocative name and shape conjures images from another time when these boatss roared across the Lago di Como and skimmed the Mediterranean waves off St. Tropez...



Thunderboat
AS184
M. 80 x 30 x 23cm, 31.5 x 11.75 x 9"

The Jaguar XK120 ruled the road; Doris Day and Cary Grant were Oscar nominated. It was a time of peace, and optimism was unbridled... Thunderboats, also called Hydroplanes, racing with each other at record speed.

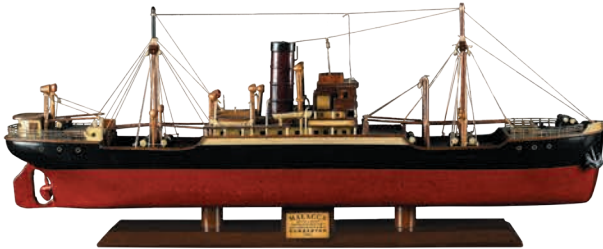


Triple Cockpit
AS183
M. 64 x 20 x 19cm, 25.25 x 7.75 x 7.5"

The throaty growl of that big engine built inside gleaming mahogany, rich leather, chrome trim. Leather padded seats displayed movie stars trying out the new bikini fashions. Husband number 3, 4, or 5.



Tramp Steamer 'Rangoon'
AS300
M. 64 x 5.5 x 31.25cm, 25.25 x 2.25 x 12.25"



Tramp Steamer 'Malacca'
AS303
M. 68 x 8 x 27cm, 26.75 x 3.25 x 10.75"



Titanic
AS083
M. 91.5 x 18 x 36cm. 36 x 7 x 14.25"

Once the largest man-made moving object on Earth, with interiors inspired by the London Ritz hotel, its own onboard newspaper and musicians with a repertoire of 352 songs, the RMS Titanic represented the pinnacle of endeavour and luxury. This attentively crafted model recreates the vessel in fascinating external detail.

During the 19th century, shipwrights created exact scale half hull models, a construction plan for a ship's hull design and its particular curvature "sheer". These were mounted and displayed in admiralty and shipping offices, and now sell at auction as decorative nautical art.



Clipper Lightning 1854
AS190
M. 94 x 9 cm x 25cm, 37 x 3.5 x 10"



Clipper Argonaut 1876
AS191
M. 94 x 9 cm x 25cm, 37 x 3.5 x 10"



Clipper Thermopylae 1868
AS192
M. 94 x 9 cm x 25cm, 37 x 3.5 x 10"





Oars make a large statement home décor pieces, which work in many environments. Place them in your beach house on your porch. Frame a doorway or place above the kitchen worktop to hang pots and pans.



Oxford Varsity
FE104
M. 235 x 16.5 x 5cm, 92.5 x 6.5 x 2"



Tender Oar, Red
FE105
M. 182 x 13.5 x 8cm, 71.75 x 5.25 x 3.25"



Tender Oar, Ivory
FE106
M. 182 x 13.5 x 8cm, 71.75 x 5.25 x 3.25"



Lifeboat Oar
FE103
M. 184.25 x 14 x 4cm, 72.5 x 5.5 x 1.5"

Royal Barge Rack
FE128
M. 90 x 9 x 7 cm, 35.5 x 3.5 x 2.75"

Royal Barge rack holds 5 Oars. Great for store display.



Royal Barge Oars



Oar #1
FE123
M. 14 x 4.5 x 144cm, 5.5 x 1.75 x 56.75"



Oar #2
FE124
M. 14 x 4.5 x 144cm, 5.5 x 1.75 x 56.75"



Oar #3
FE125
M. 14 x 4.5 x 144cm, 5.5 x 1.75 x 56.75"



Oar #4
FE126
M. 15 x 4.2 x 117.5cm, 6 x 1.75 x 46.25"



Oar #5
FE127
M. 15 x 4.2 x 117.5cm, 6 x 1.75 x 46.25"

Black Oar
FE120
M. 120 x 9 x 15cm, 47.25 x 3.5 x 6"



Red Oar
FE119
M. 120 x 9 x 15cm, 47.25 x 3.5 x 6"



Backpack Oars
FE108
M. 9 x 3 x 60.5cm, 3.5 x 7.5 x 23.75"

